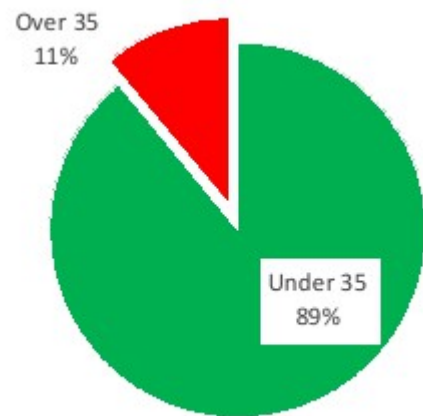
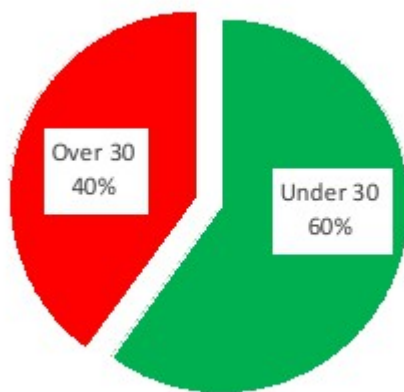


# SID Report

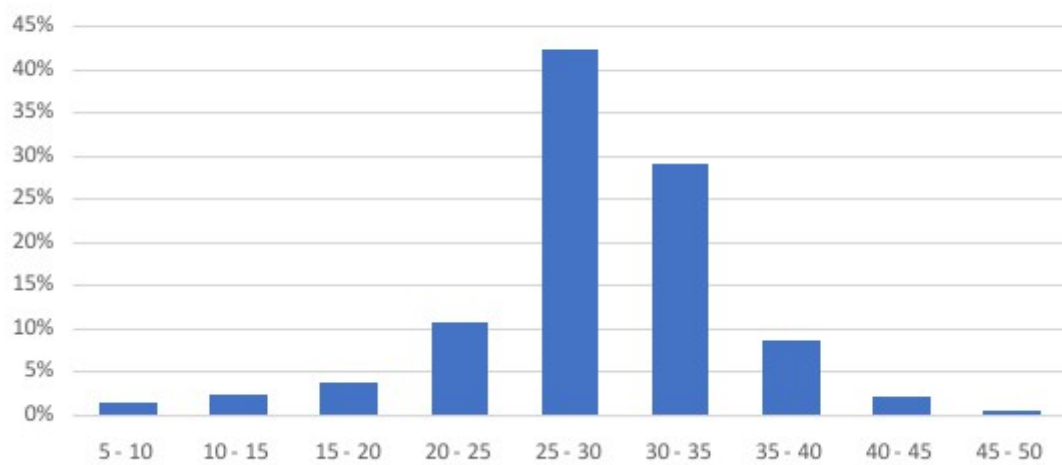
Location:	Green House, Kingston Deverill
Traffic:	From Mere
Start:	19 Mar 2026 15:50
Finish:	06 Apr 2026 15:00



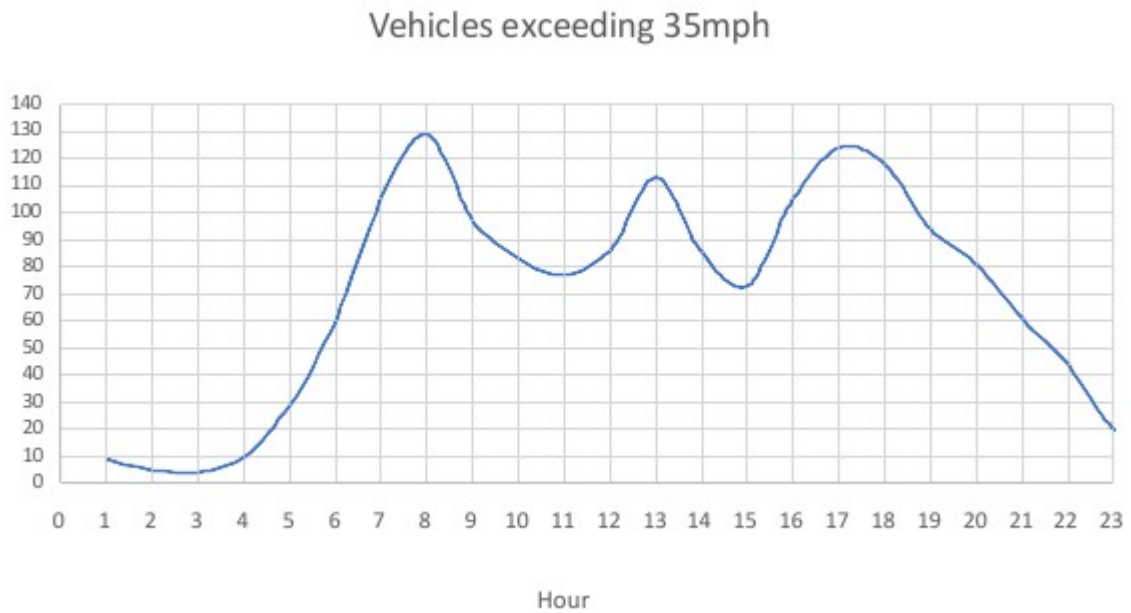
## Speed



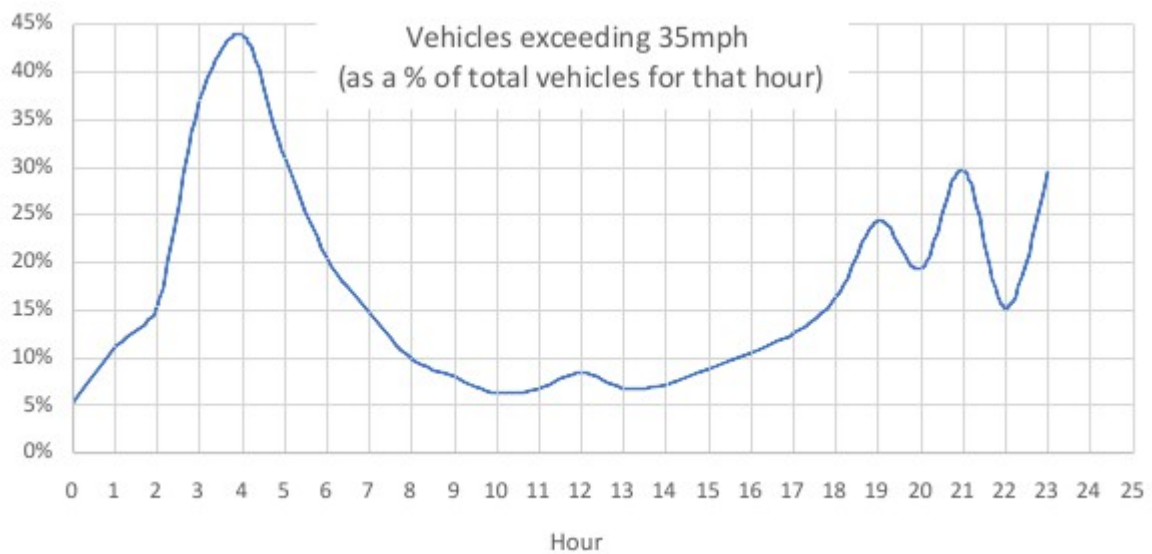
Distribution - all vehicles



The worst times of the day for excessive speeding are:



When speeding is looked at as percentage of the total vehicles at that time a different picture emerges:



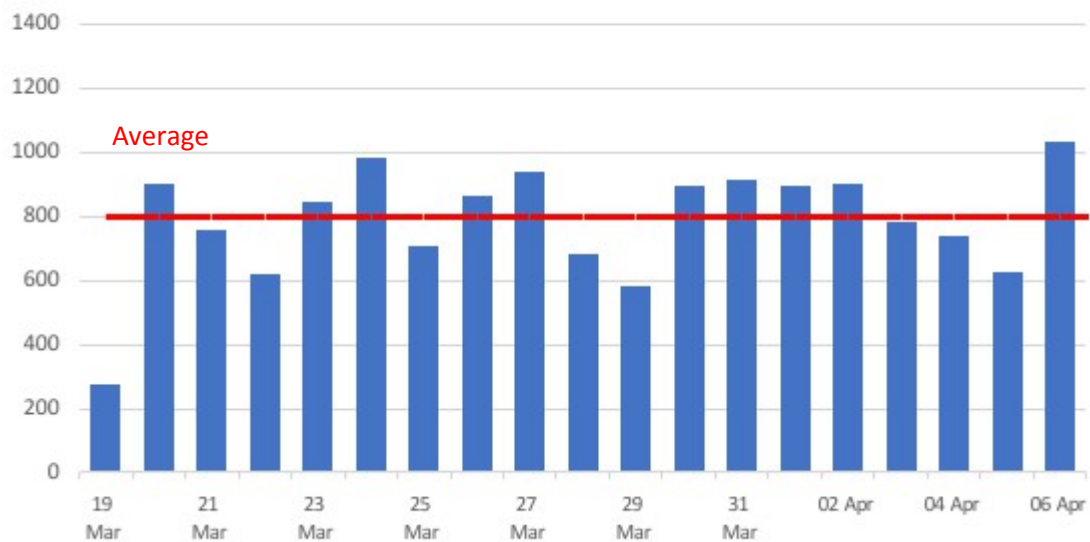
Drivers are more likely to exceed the speed limit in the early hours when there is little traffic around.

The worst offenders were:

Speed mph	Vehicles
40 - 45	303
45 - 50	52
50 - 55	8
55 - 60	1
Total	364

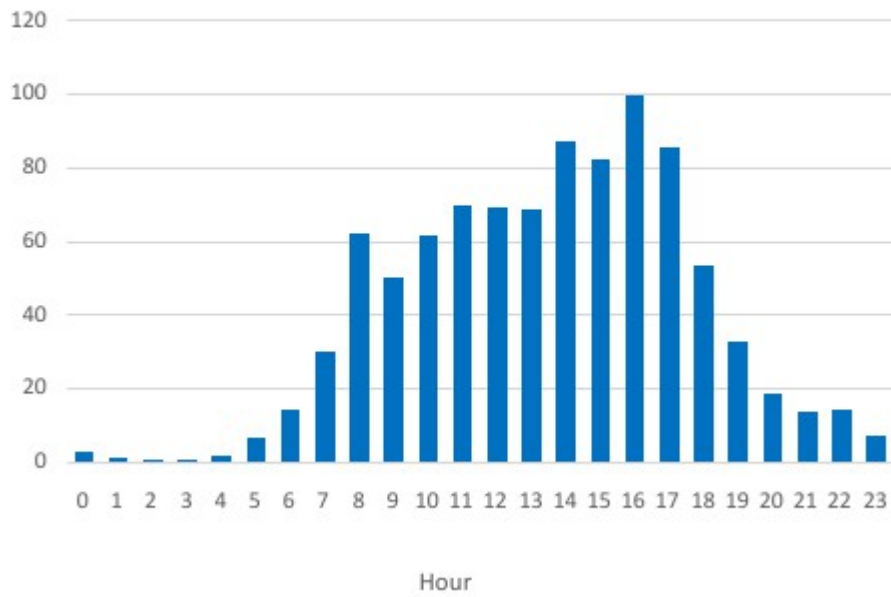
## Traffic Volumes

Daily Vehicles

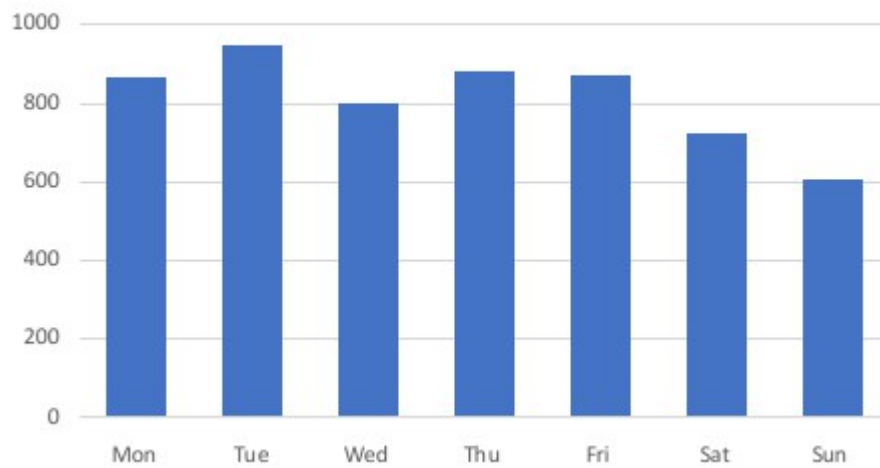


An average of 800 vehicles per day travelling from the Mere direction towards Warminster. The 3<sup>rd</sup> to 6<sup>th</sup> April was the Easter Bank Holiday. Unfortunately SID's battery died on the Bank Holiday Monday afternoon at 3pm so did not capture the full volume of traffic returning home from the West Country. Previous SID reports suggest that this may be as high as 4,000 vehicles and subjectively traffic was heavy.

Vehicles by time of day



Vehicles by day



Peak holiday traffic returning from the West Country was on a Monday.