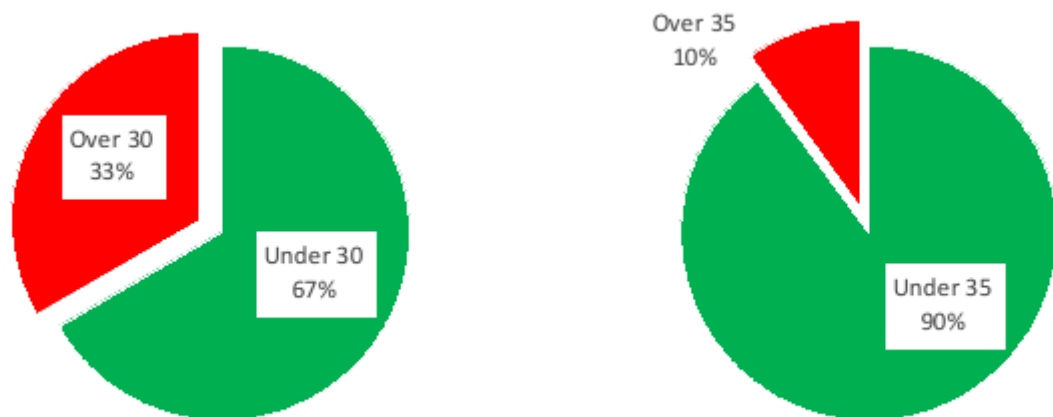


SID Report

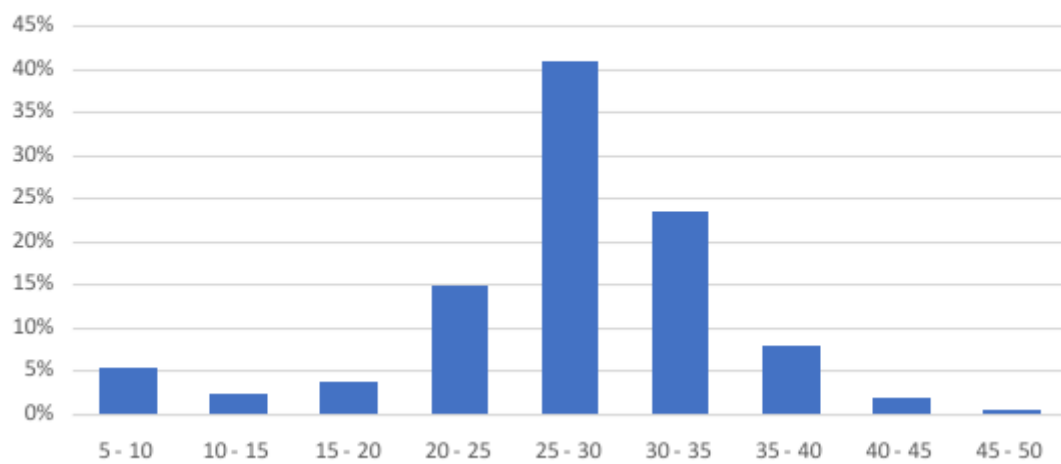
Location:	Dexter Barn, Brixton Deverill
Traffic:	From Warminster
Start:	9 February 26 15:00
Finish:	1 March 26 07:50



Speed

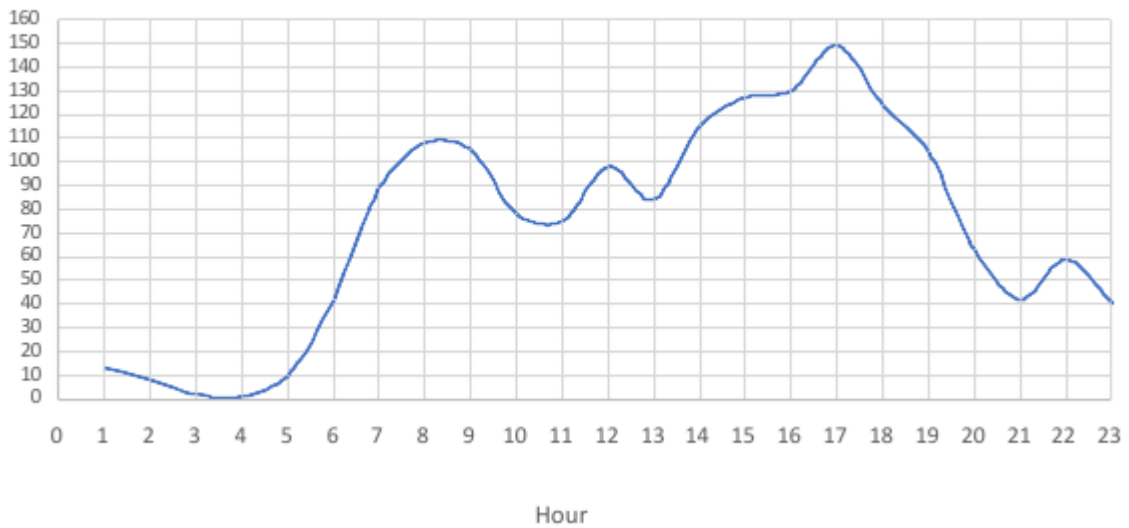


Distribution - all vehicles

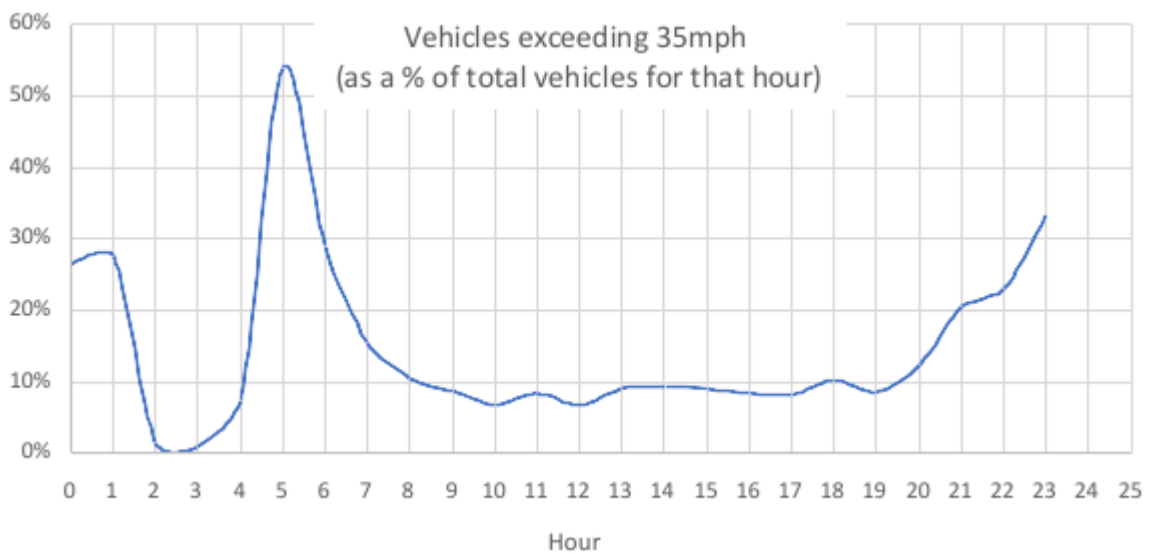


The worst times of the day for excessive speeding are:

Vehicles exceeding 35mph



Peaks at rush hour, when traffic volumes are highest. When speeding is looked at as percentage of the total vehicles at that time a different picture emerges:



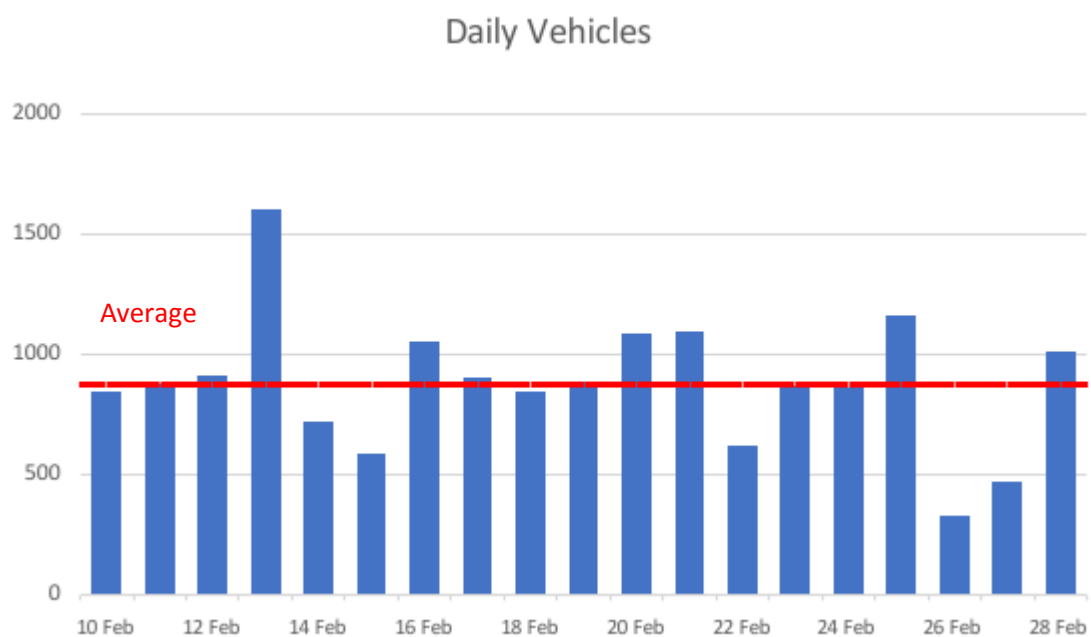
Drivers are more likely to exceed the speed limit in the early hours when there is little traffic around.

The worst offenders were:

Speed mph	Vehicles
40 - 45	296
45 - 50	52
50 - 55	13
Total	361

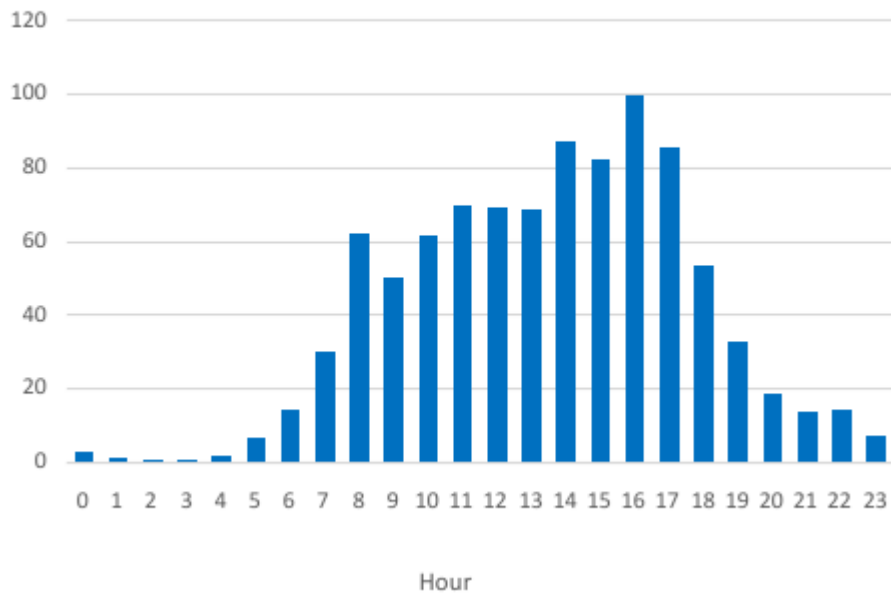
These figures equate to 19 vehicles per day exceeding 40mph in a 30mph limit.

Traffic Volumes



An average of nearly 900 vehicles per day travelling from the Warminster direction towards Mere. The reason for the increased volume on 13 February is not known.

Vehicles by time of day



Vehicles by day

