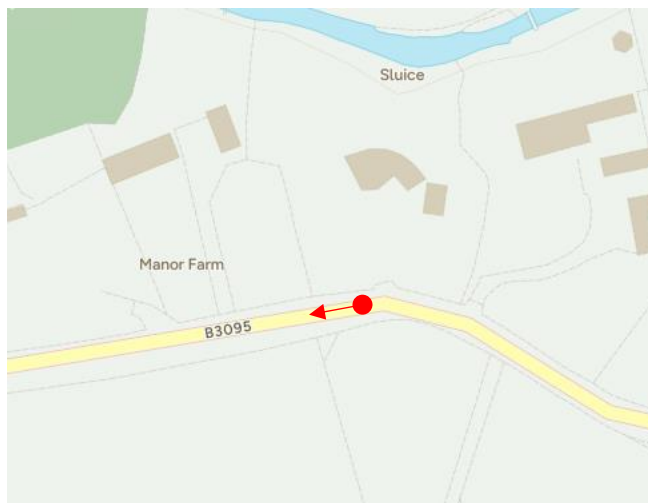
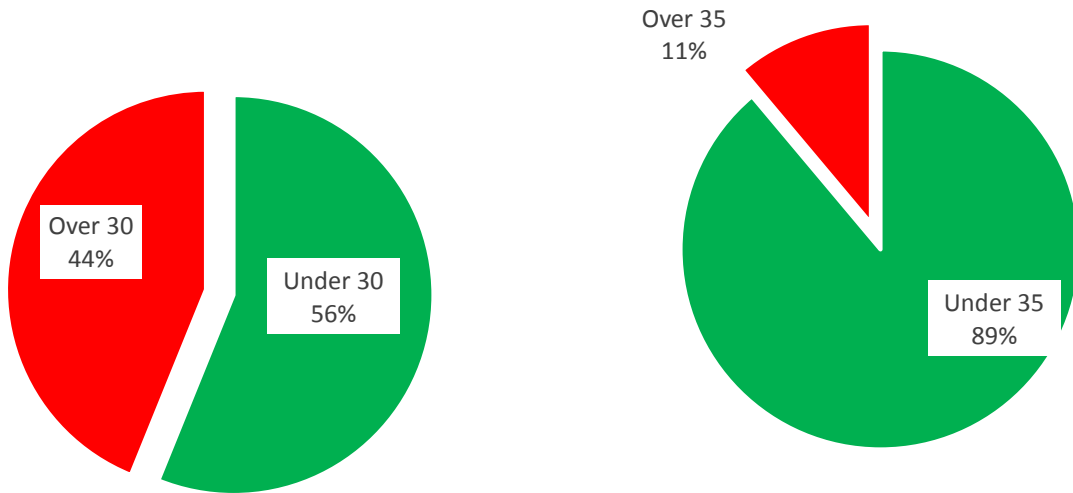


SID Report

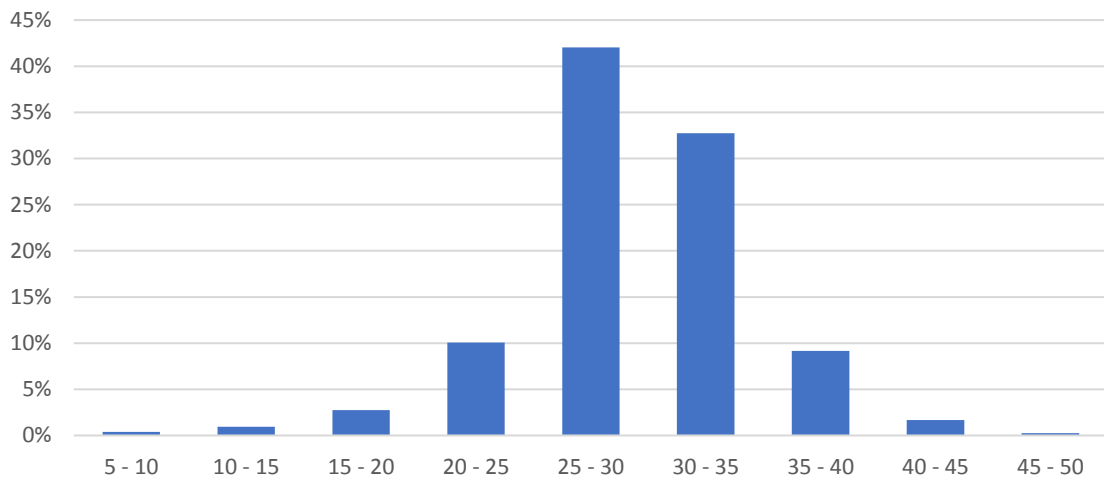
Location:	Green House, Kingston Deverill
Traffic:	From Mere
Start:	22 Dec 2025 15:15
Finish:	05 Jan 2026 16:00



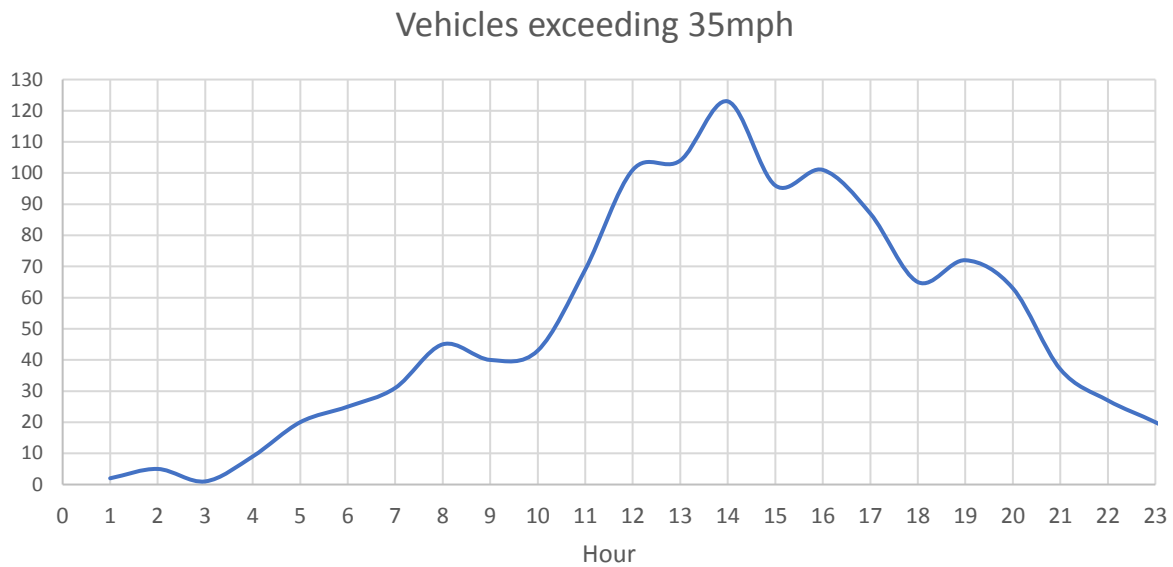
Speed



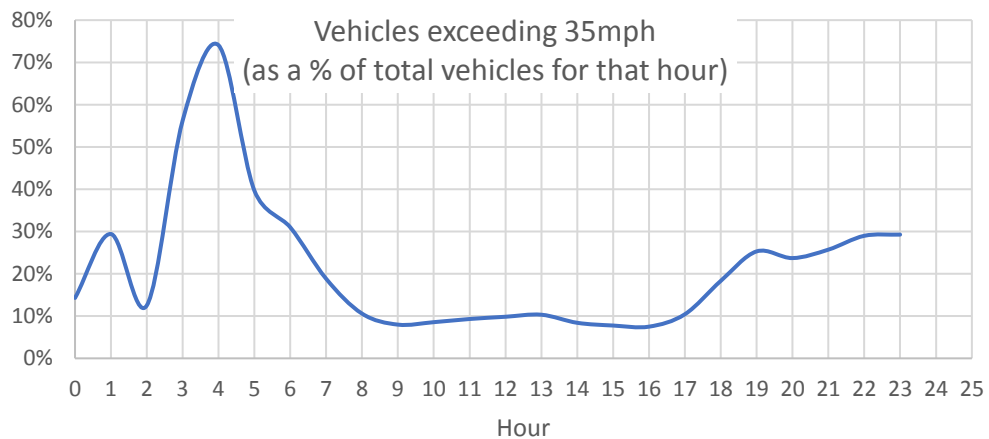
Distribution - all vehicles



The worst times of the day for excessive speeding are:



Peaks at rush hour, when traffic volumes are highest. When speeding is looked at as percentage of the total vehicles at that time a different picture emerges:

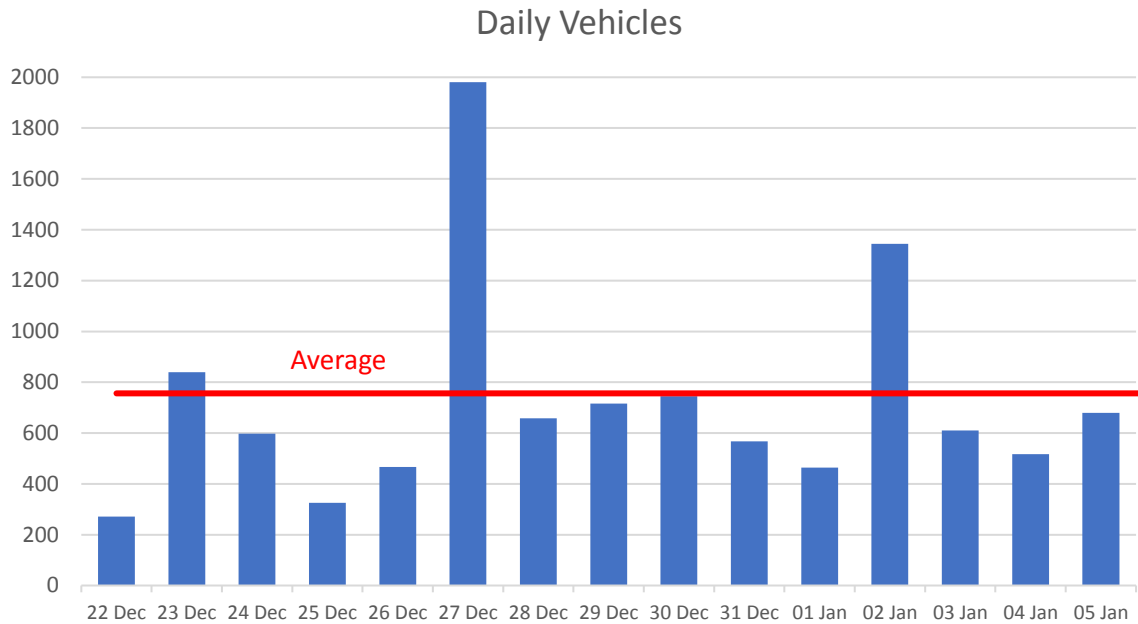


Drivers are more likely to exceed the speed limit in the early hours when there is little traffic around.

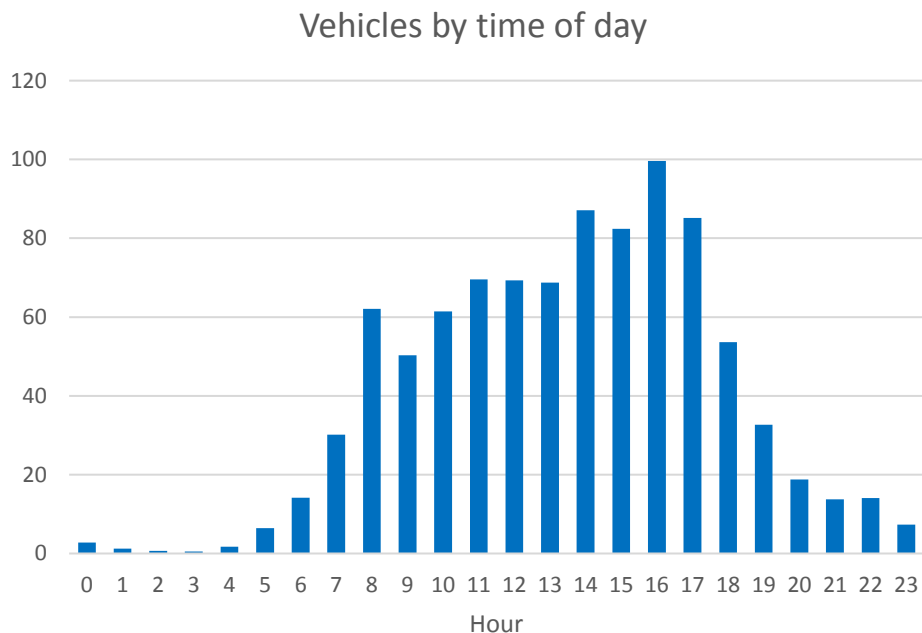
The worst offenders were:

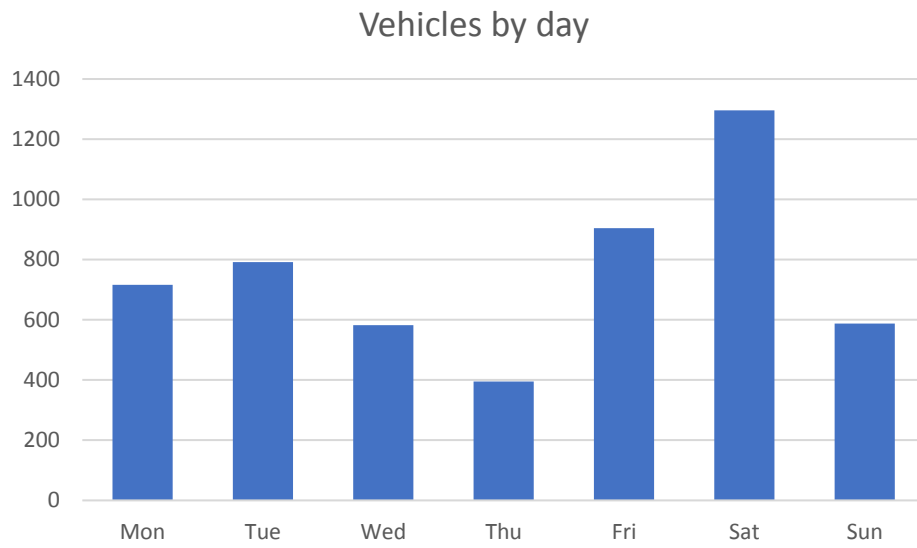
Speed mph	Vehicles
40 - 45	179
45 - 50	26
50 - 55	3
55 - 60	1
Total	209

Traffic Volumes



An average of just under 800 vehicles per day travelling from the Mere direction towards Warminster. This is the Christmas break and lower than usual. The peaks on the 27th Dec and 2nd Jan are people returning from the West Country after their holidays.





Peak holiday traffic returning from the West Country was on a Saturday.