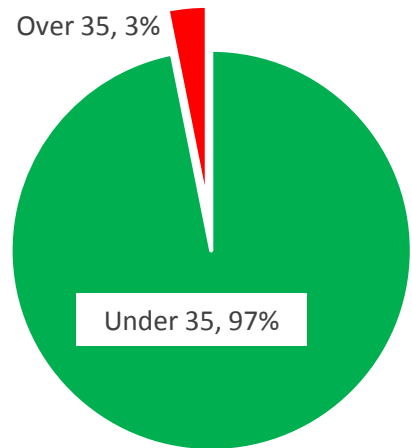
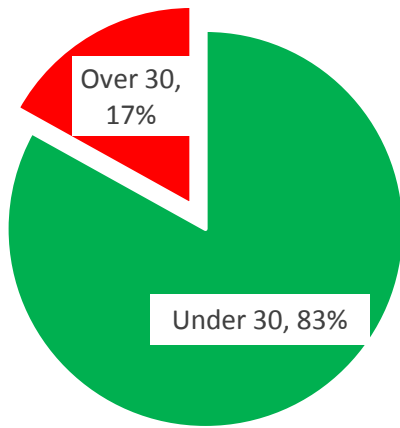


# SID Report

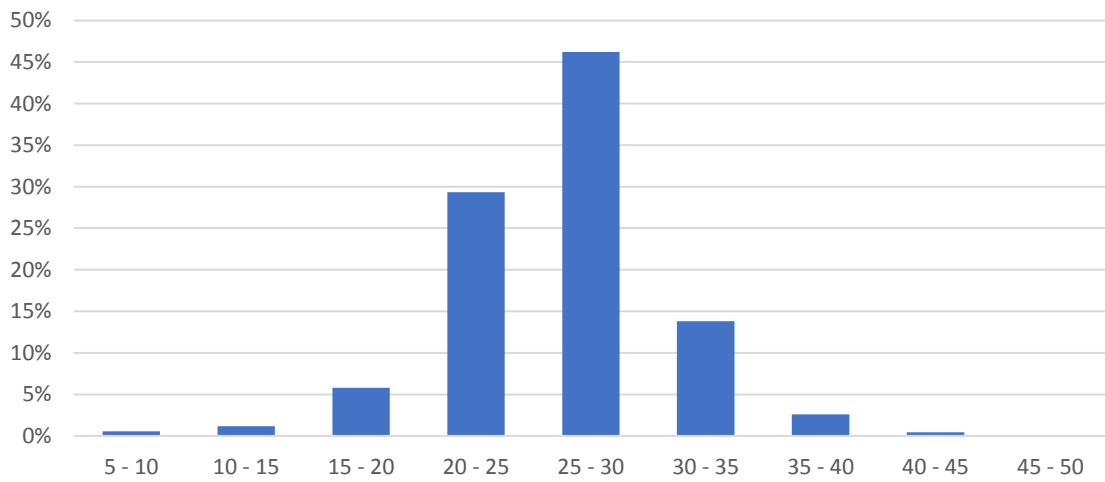
Location:	Post Box, Kingston Deverill
Traffic:	From Warminster
Start:	28 Nov 25 13:25
Finish:	15 Dec 25 16:20



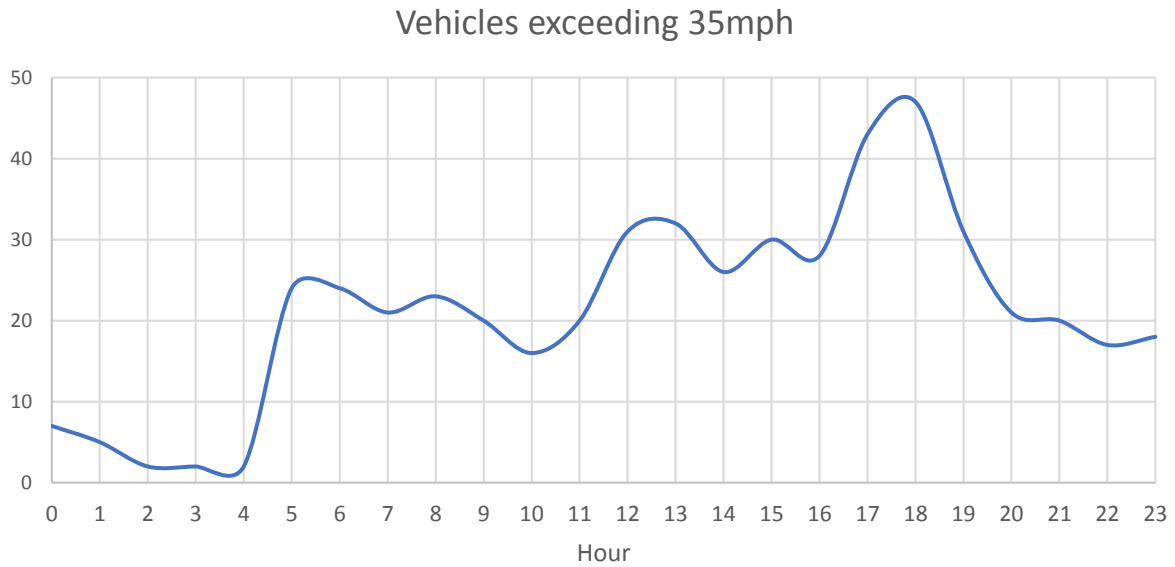
# Speed



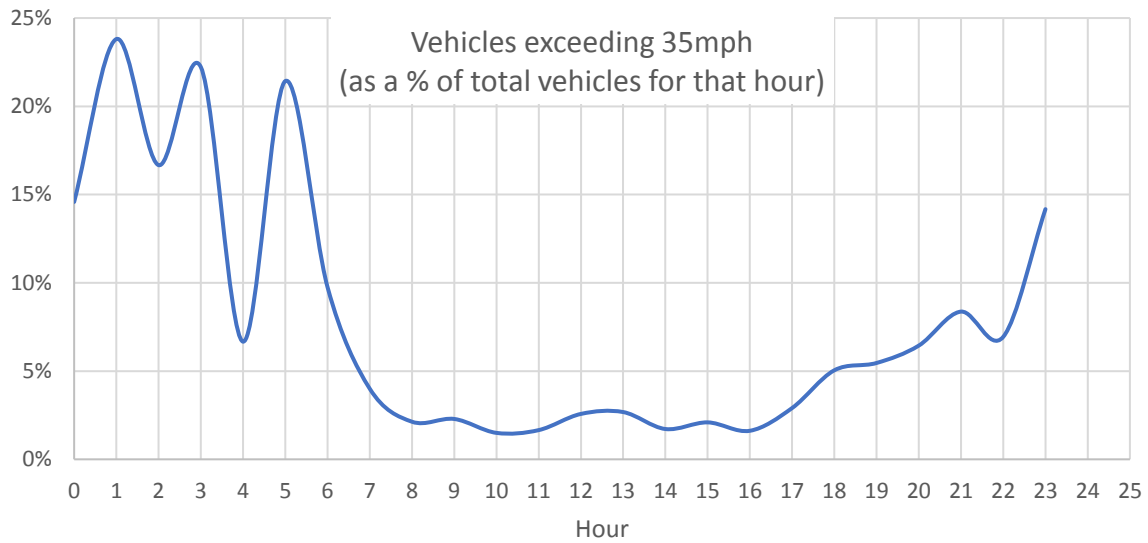
Distribution - all vehicles



The worst times of the day for excessive speeding are:



Peaks at rush hour, when traffic volumes are highest. When speeding is looked at as percentage of the total vehicles at that time a different picture emerges:



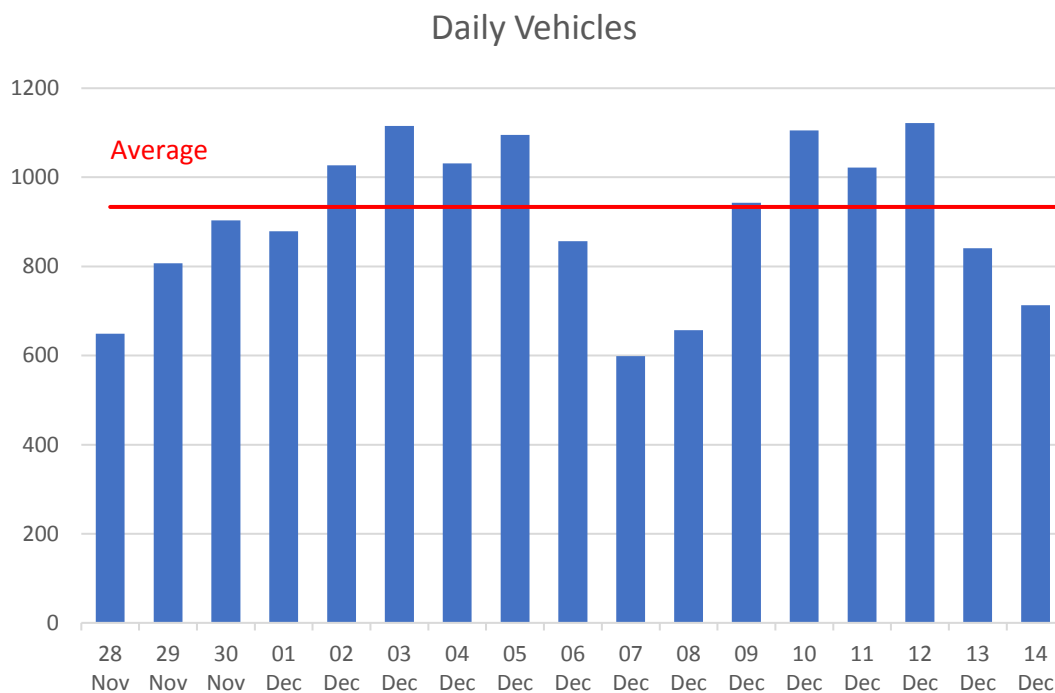
Drivers are more likely to exceed the speed limit in the early hours when there is little traffic around.

The worst offenders were:

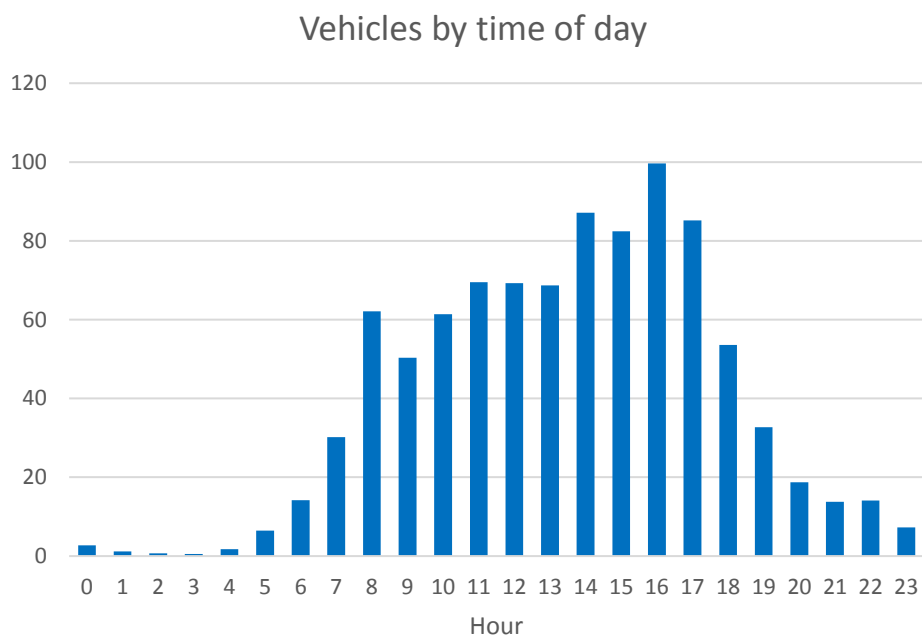
Speed mph	No vehicles
40 - 45	72
45 - 50	15
55 - 60	1
<b>Total</b>	<b>385</b>

These figures equate to 5 vehicles per day exceeding 40mph in a 30mph limit. Lower than other locations in the Deverills.

## Traffic Volumes



An average of over 900 vehicles per day travelling from the Warminster direction towards Mere.



Vehicles by day

