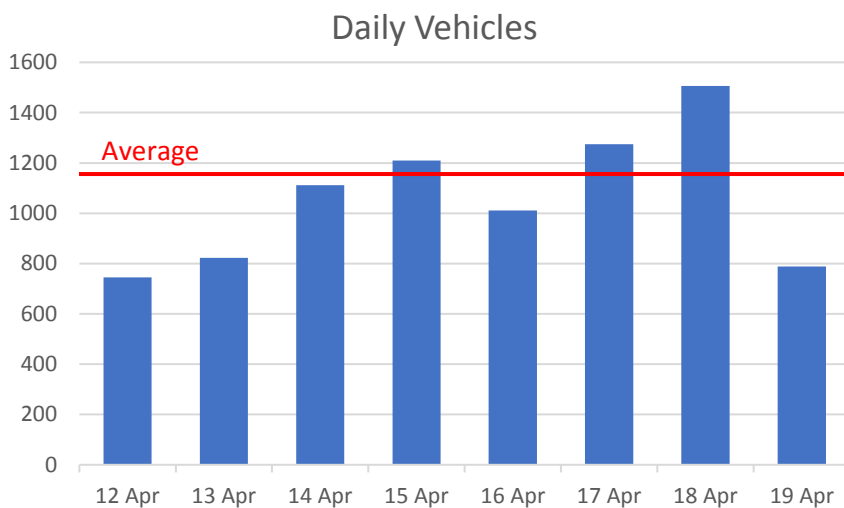


# SID Report – Easter 2025

This is an Easter special. We all know the traffic through the Deverills is bad at bank holidays, but how bad?

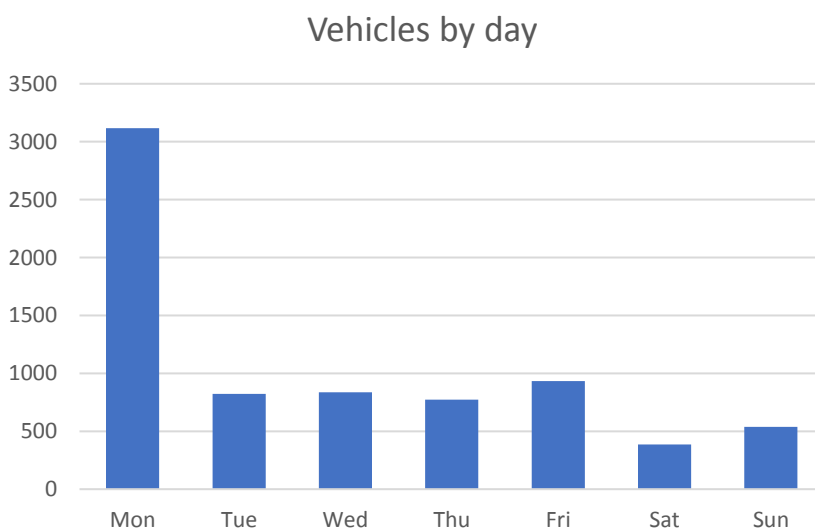
In the week before Easter, SID was deployed at the post box in Kingston facing towards Warminster – to capture the holiday traffic heading towards the West Country. Easter weekend it was moved to the Green House in Kingston facing Mere – to capture the holiday traffic going home.

## Heading towards the West Country:



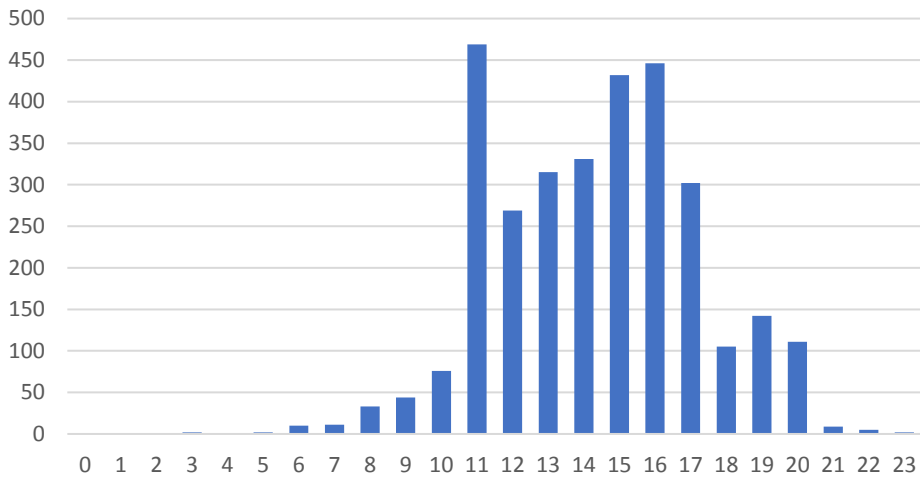
A steady build up during the week peaking on Good Friday. Not everyone goes on holiday at the same time.

## Heading home:



Very heavy traffic on Easter Monday. For comparison “normal” traffic through the Deverills is in the order of 800 vehicles per day in each direction. Good Friday saw around double the normal level and Easter Monday **four** times normal.

### Easter Monday - Vehicles by hour



Similar reports will be generated for future Bank Holidays.