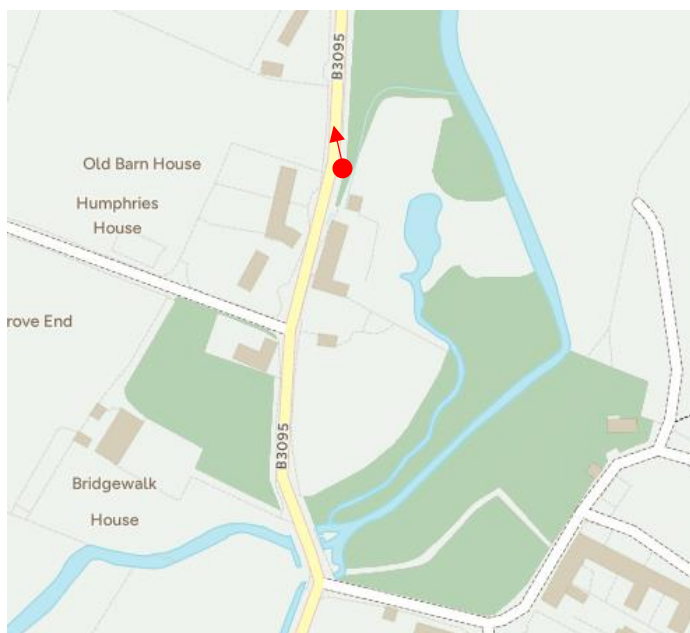
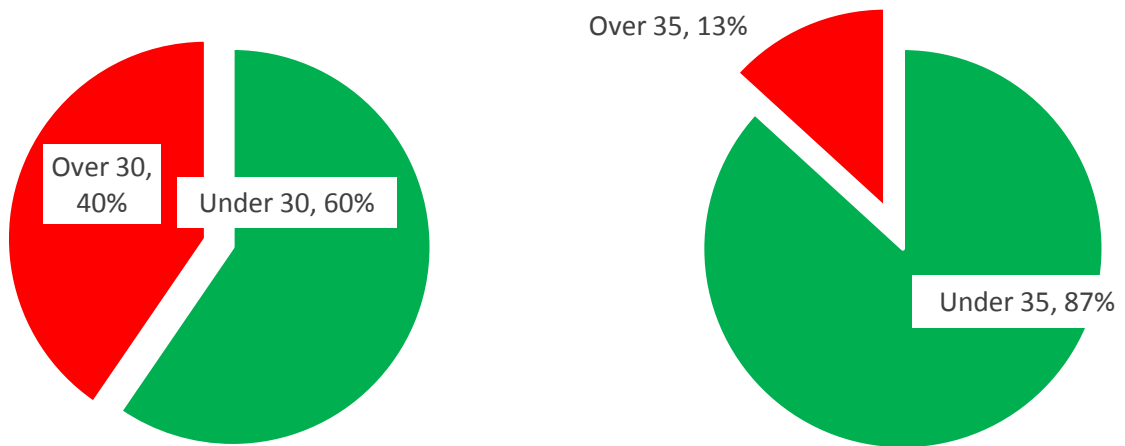


SID Report

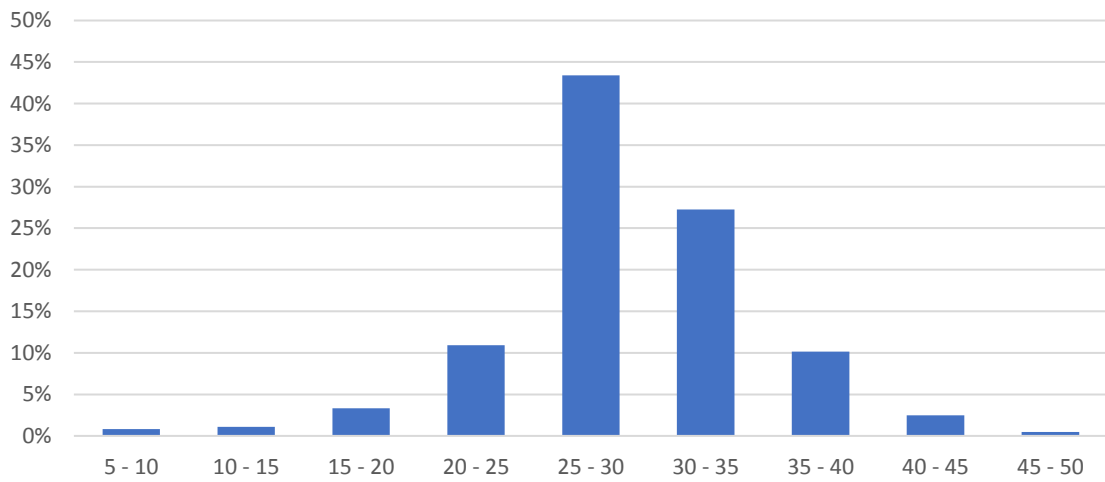
Location:	Dexter Barn, Brixton Deverill
Traffic:	From Warminster
Start:	12 Mar 25 13:00
Finish:	8 Apr 25 12:00



Speed

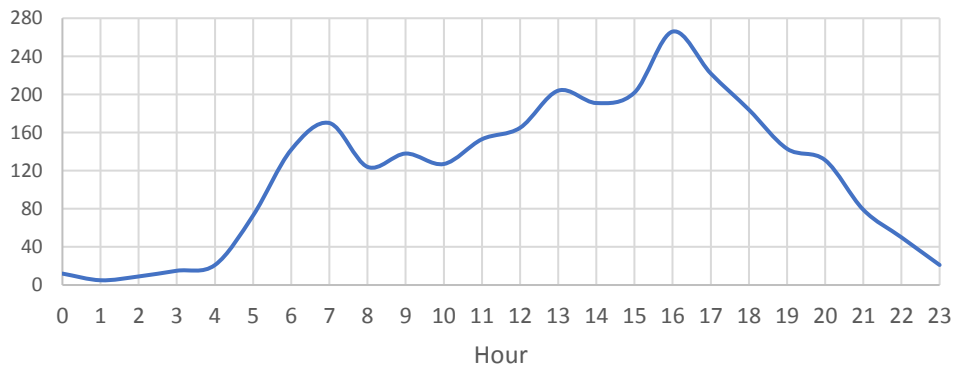


Distribution - all vehicles

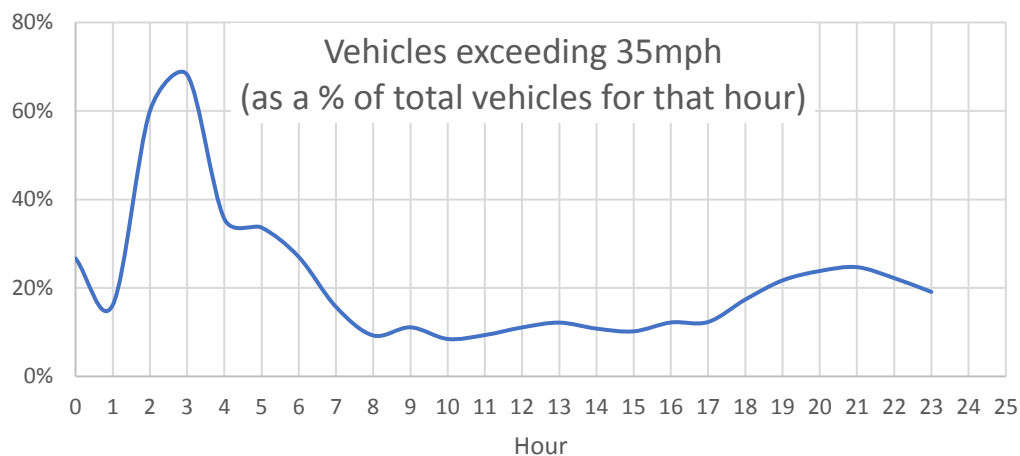


The worst times of the day for excessive speeding are:

Vehicles exceeding 35mph



Peaks at rush hour, when traffic volumes are highest. When speeding is looked at as percentage of the total vehicles at that time a different picture emerges:



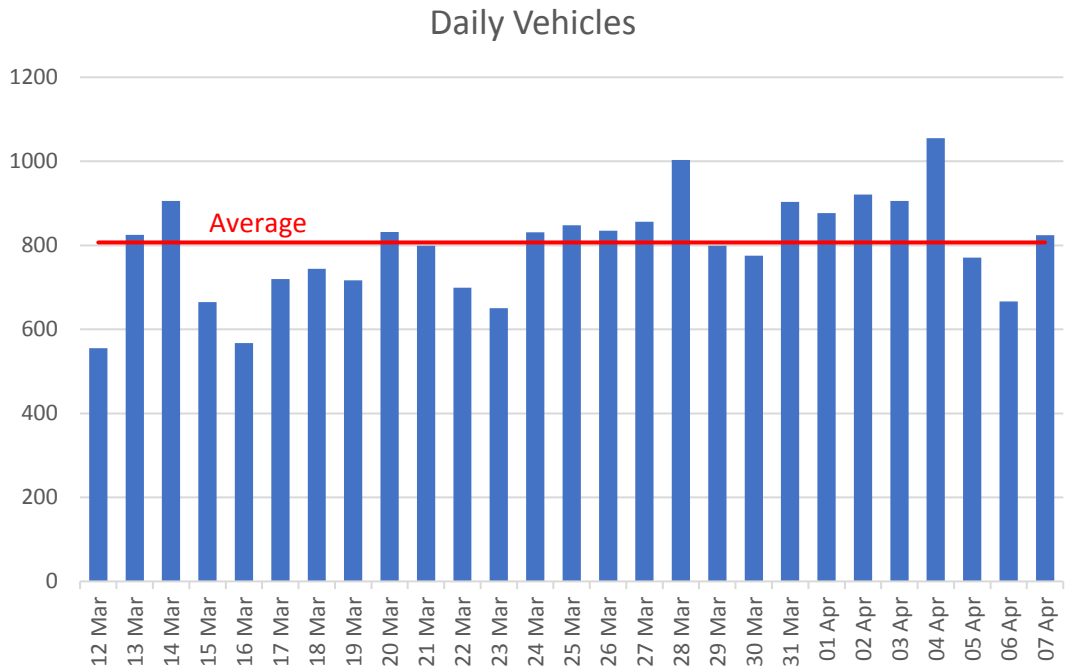
Drivers are more likely to exceed the speed limit in the early hours when there is little traffic around.

The worst offenders were:

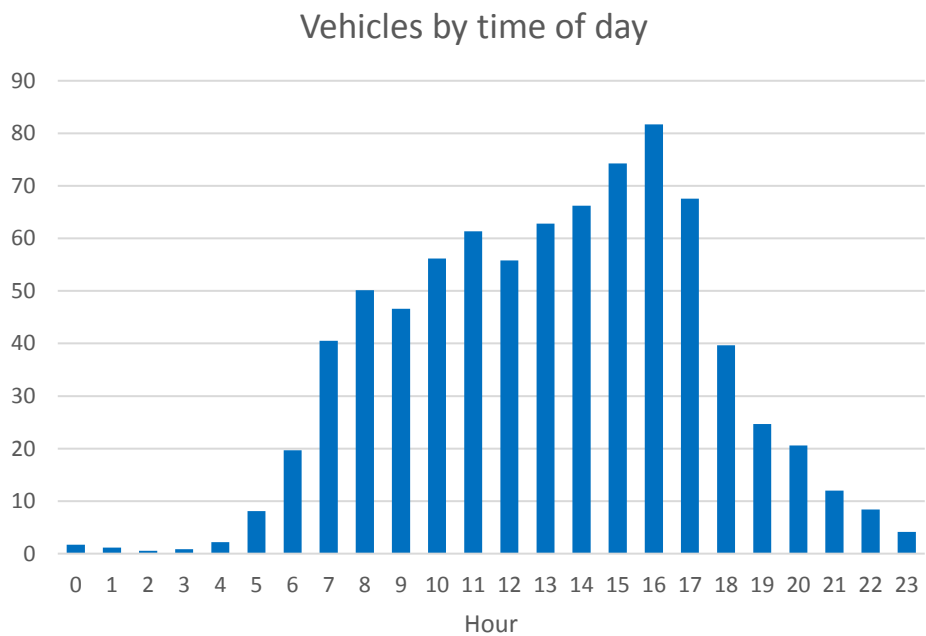
Speed mph	No vehicles
40 - 45	536
45 - 50	101
50 - 55	21
55 - 60	1
60 - 65	4
65 - 70	1
Total	664

These figures equate to 24 vehicles per day exceeding 40mph in a 30mph limit. The worst offender at over 65mph was at 21:10 on the 15th March.

Traffic Volumes



An average of around 800 vehicles per day travelling from the Warminster direction towards Mere.



Vehicles by day

