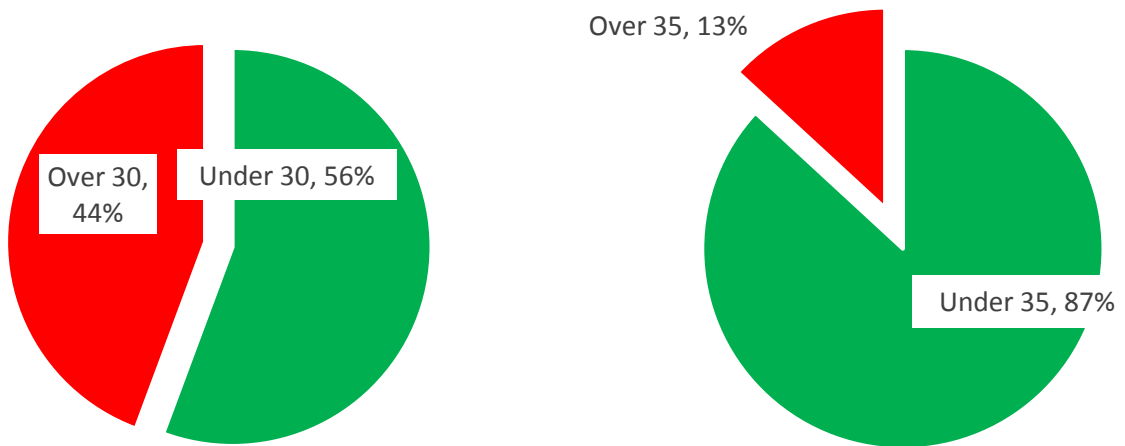


SID Report

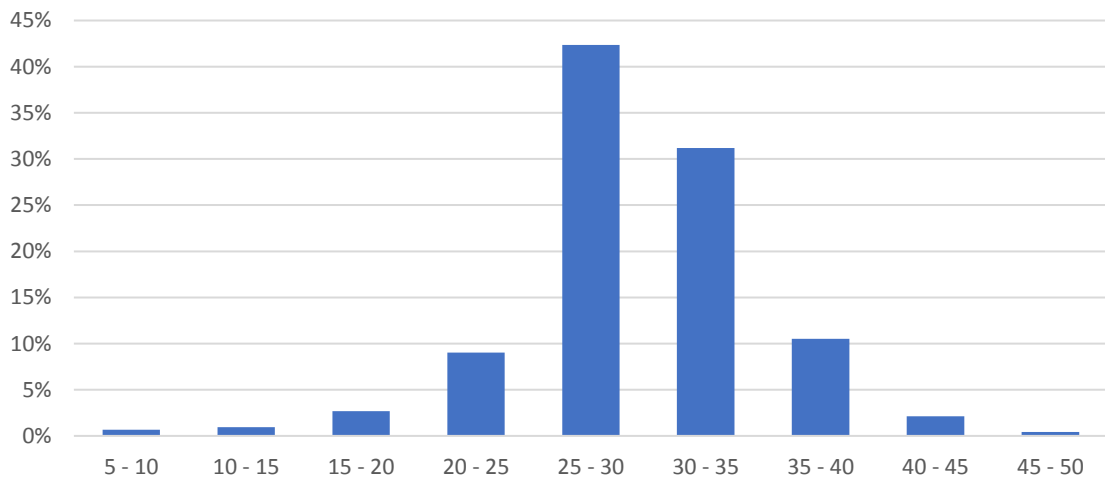
Location:	Green House, Kingston Deverill
Traffic:	From Mere
Start:	31 Jan 25 10:00
Finish:	18 Feb 25 23:00



Speed

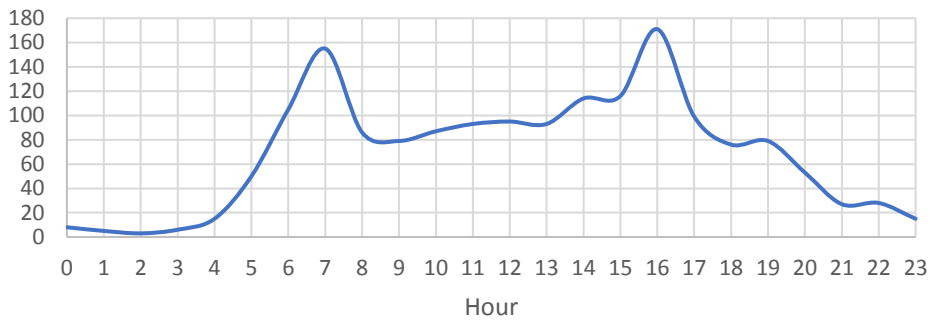


Distribution - all vehicles



The worst times of the day for excessive speeding are:

Vehicles exceeding 35mph



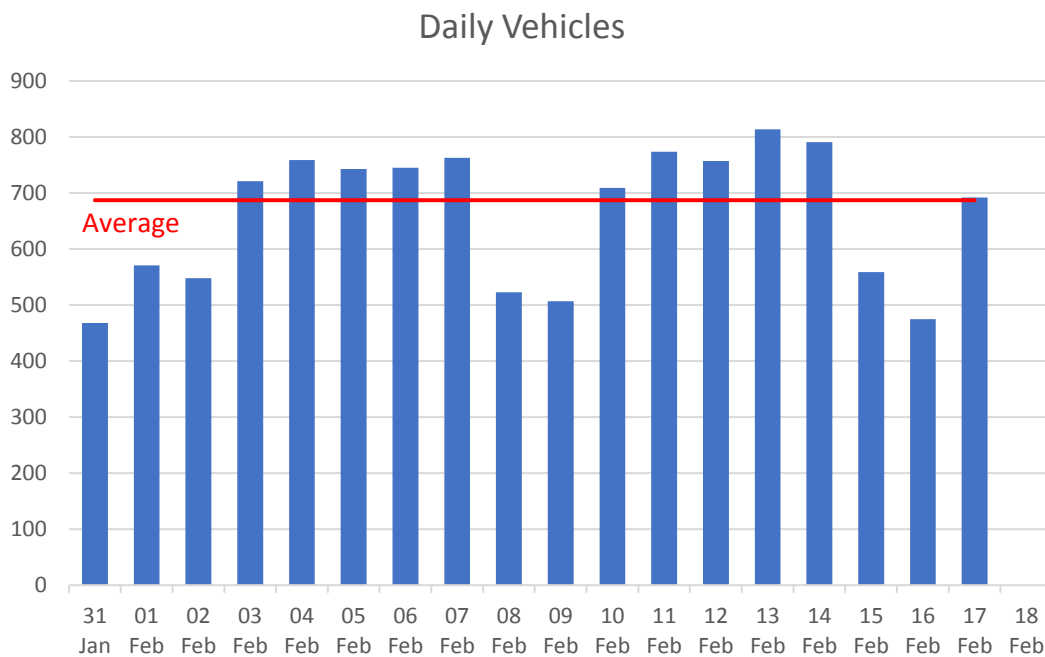
Peaks at rush hour.

The worst offenders were:

Speed mph	No vehicles
40 - 45	268
45 - 50	54
50 - 55	6
55 - 60	3
60 - 65	1
Total	332

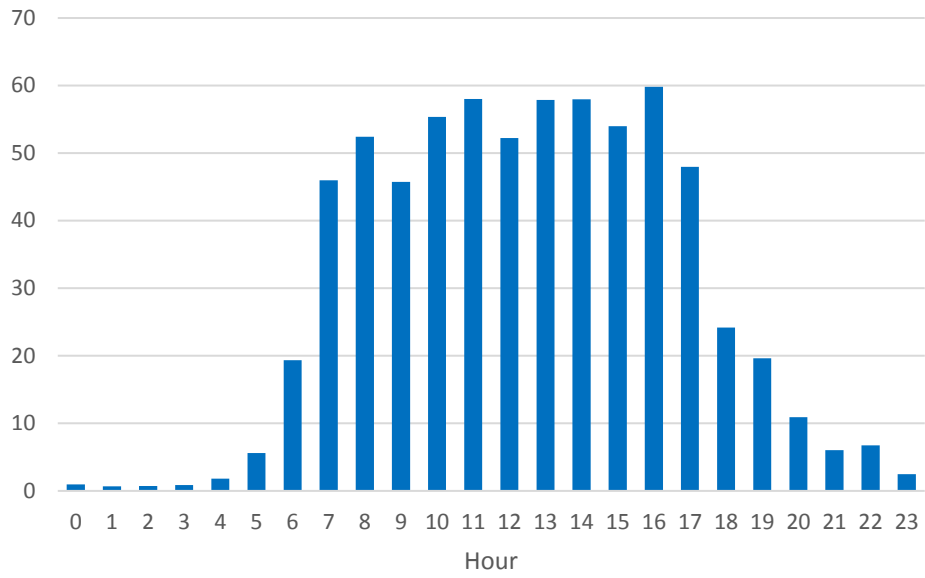
These figures equate to 17 vehicles per day exceeding 40mph in a 30mph limit. The worst offender at over 60mph was at 11:45 on the 2nd February.

Traffic Volumes



An average of nearly 700 vehicles per day travelling from the Mere direction towards Warminster.

Vehicles by time of day



Vehicles by day

