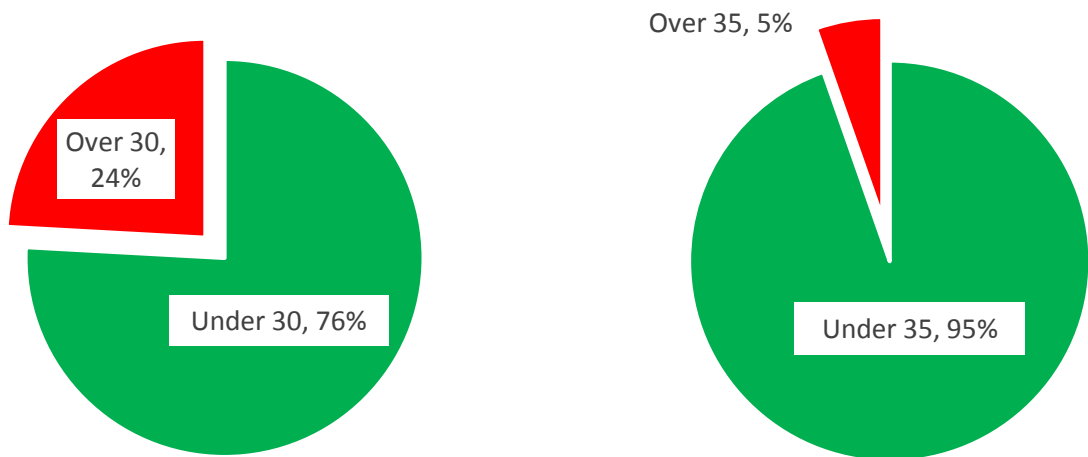


SID Report

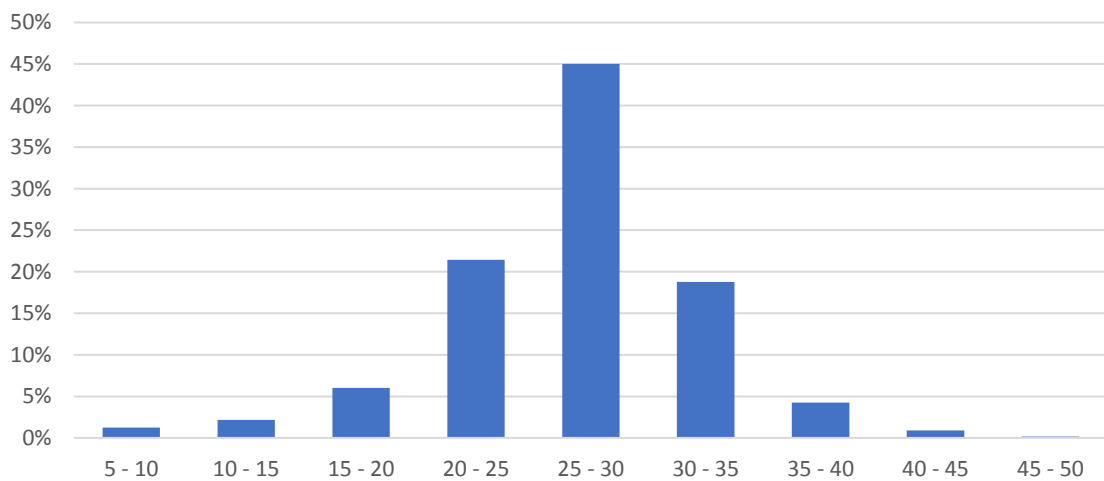
Location:	Monkton Green, Monkton Deverill
Traffic:	From Warminster
Start:	10 Jan 25 14:00
Finish:	25 Jan 25 15:00



Speed

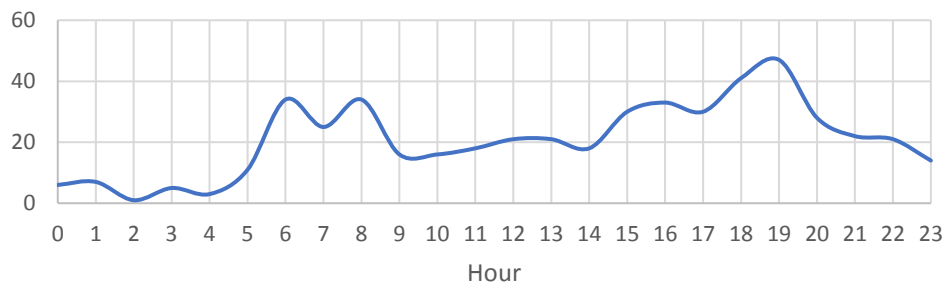


Distribution - all vehicles



The worst times of the day for excessive speeding are:

Vehicles exceeding 35mph



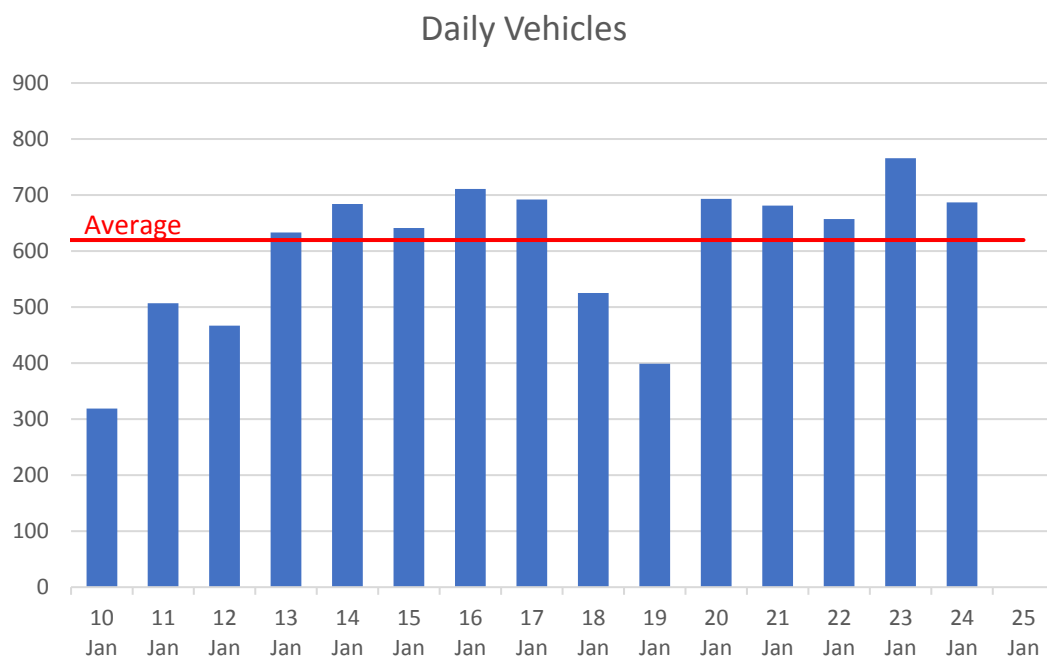
No clear correlation between speeding and traffic volume.

The worst offenders were:

Speed mph	No vehicles
40 - 45	85
45 - 50	17
50 - 55	2
55 - 60	2
60 - 65	
Total	106

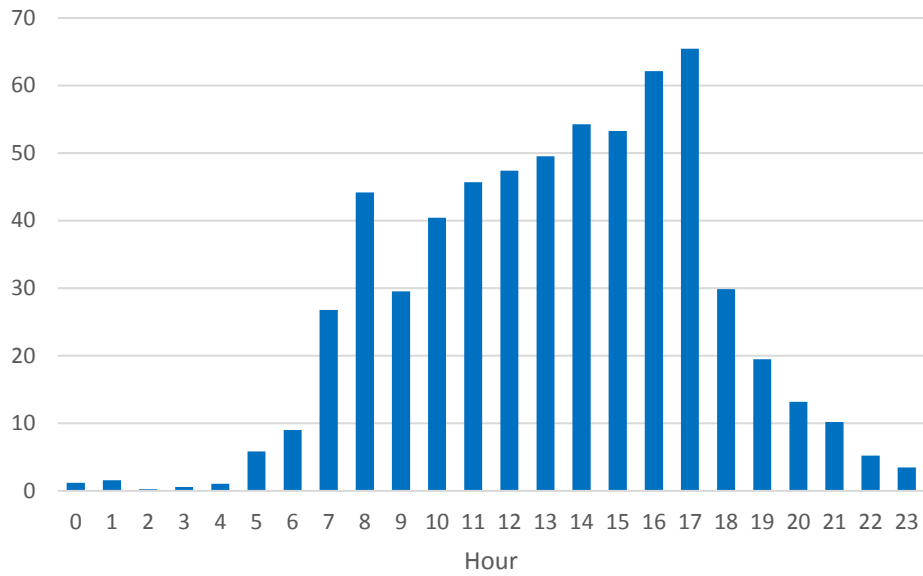
These figures equate to 33 vehicles per day exceeding 35mph and 7 vehicles per day travelling in excess of 40mph in a 30mph limit.

Traffic Volumes



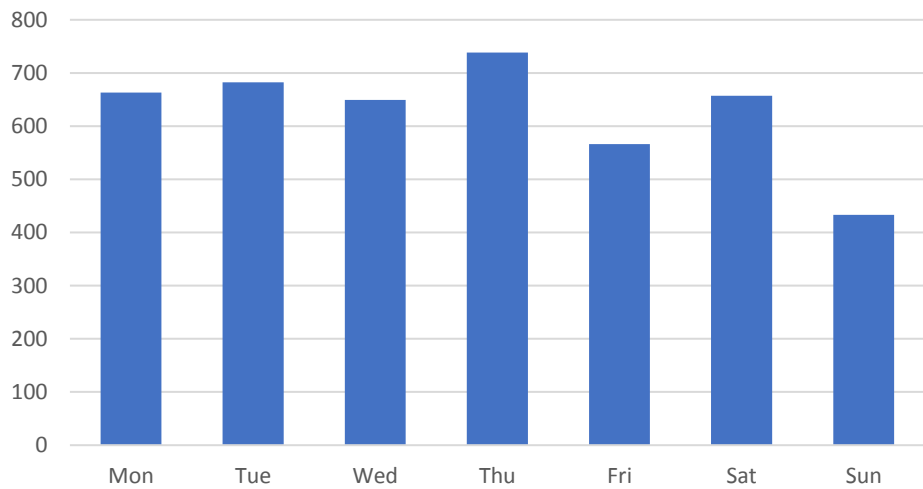
An average of just over 600 vehicles per day travelling from the Warminster direction towards Mere.

Vehicles by time of day



Afternoon 'rush hour' can be clearly seen.

Vehicles by day



A reduction on Sunday.