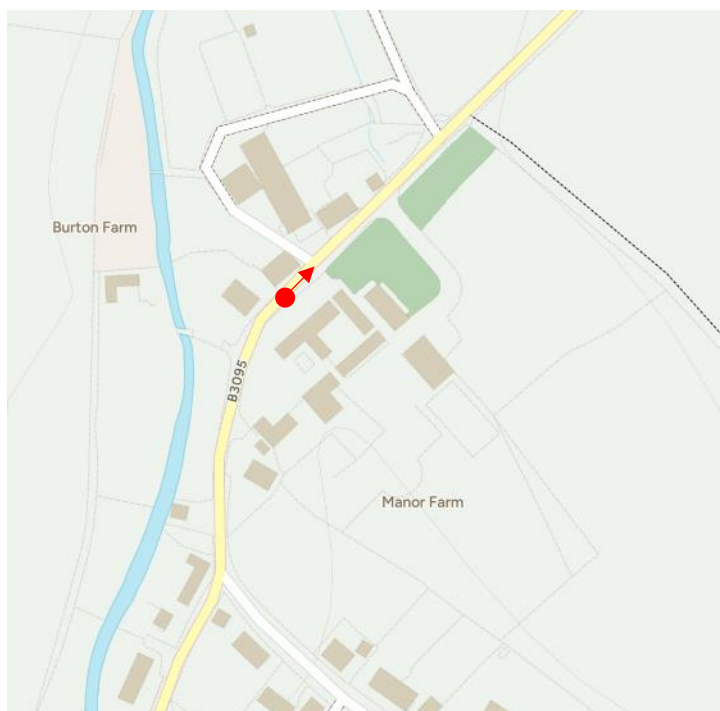


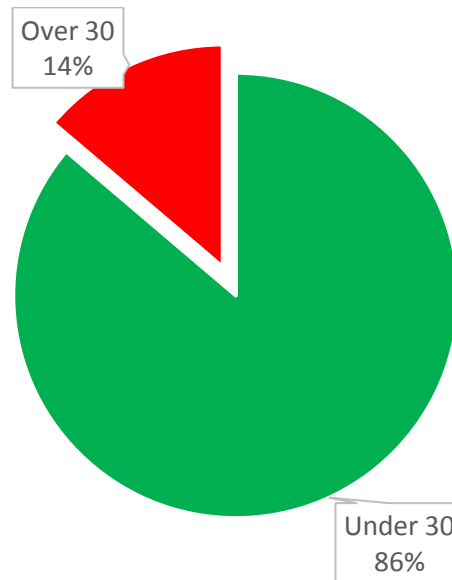
SID Report

Location:	Burton Farm, Monkton Deverill
Traffic:	From Warminster
Start:	14 Dec 24 14:30
Finish:	30 Dec 24 10:30

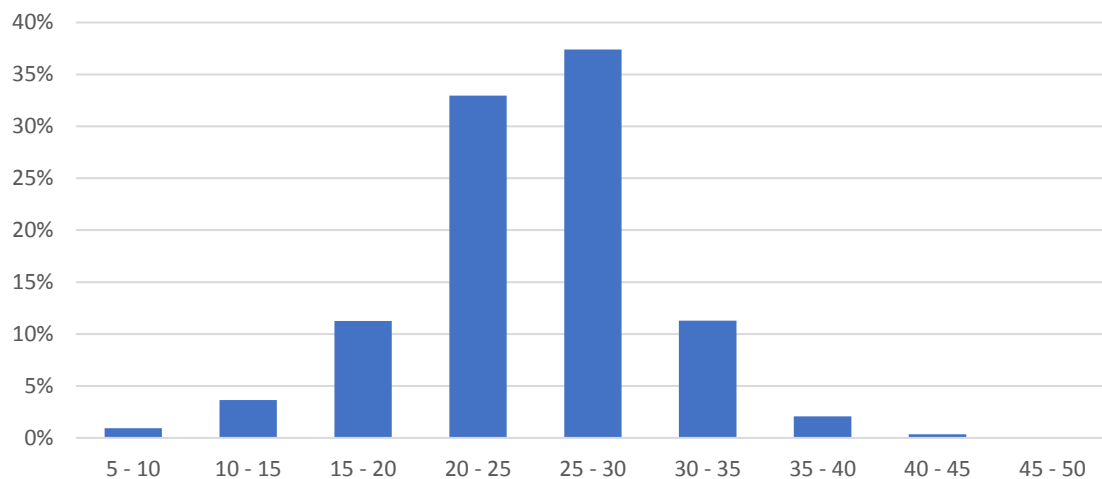


Speed

Marked reduction in speeding compared to previous locations in Brixton and Kingston where approaching 40% of vehicles were over 30mph.



Distribution - all vehicles



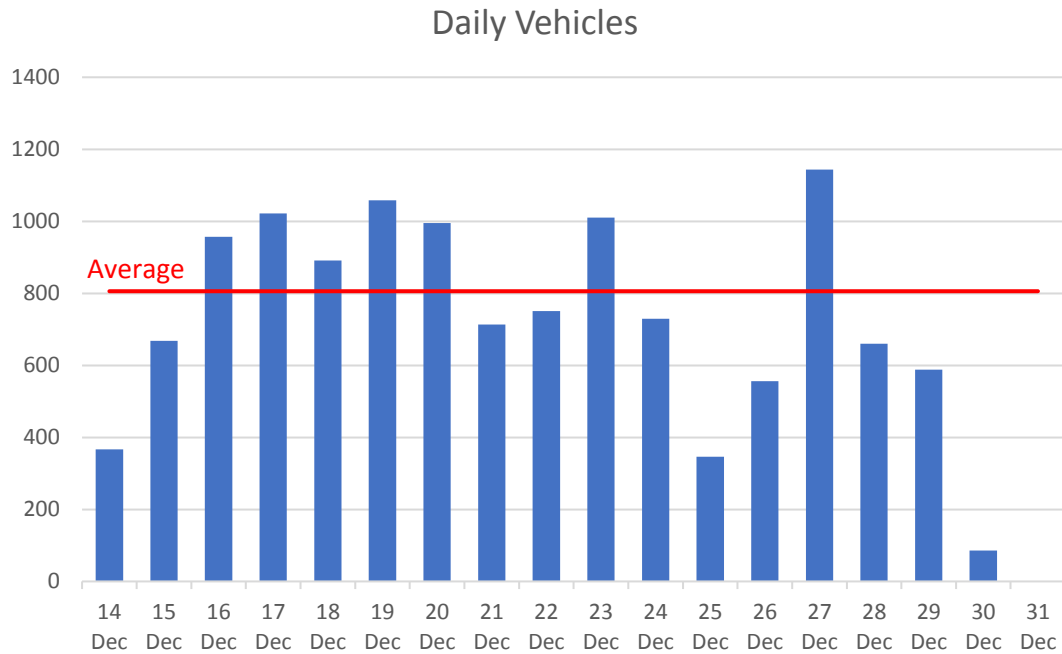
There is no obvious pattern between speeding and time of day.

A significant reduction in the number of vehicles travelling at excessive speed compared to previous reports. The worst offenders were:

Speed mph	No vehicles	No vehicles Brixton*
40 - 45	45	291
45 - 50	5	42
50 - 55	1	3

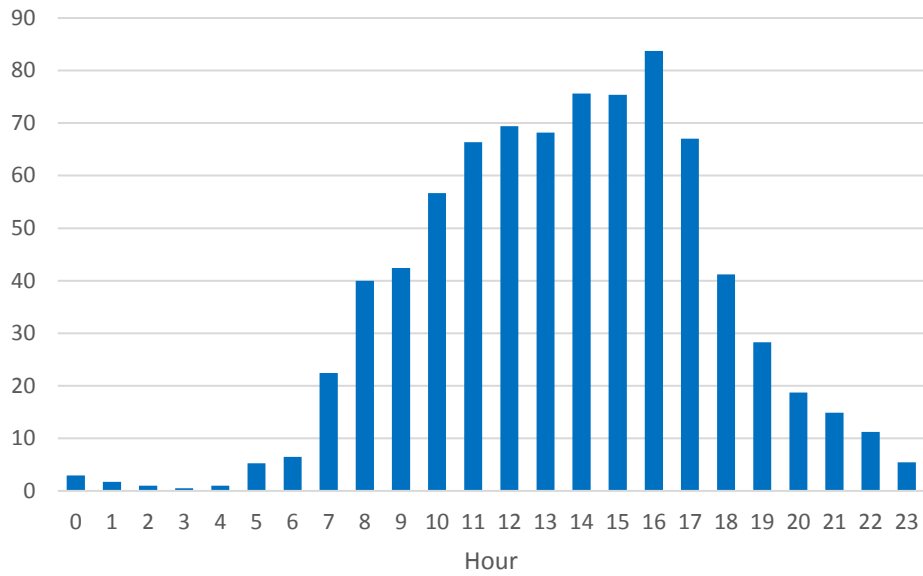
* previous report

Traffic Volumes



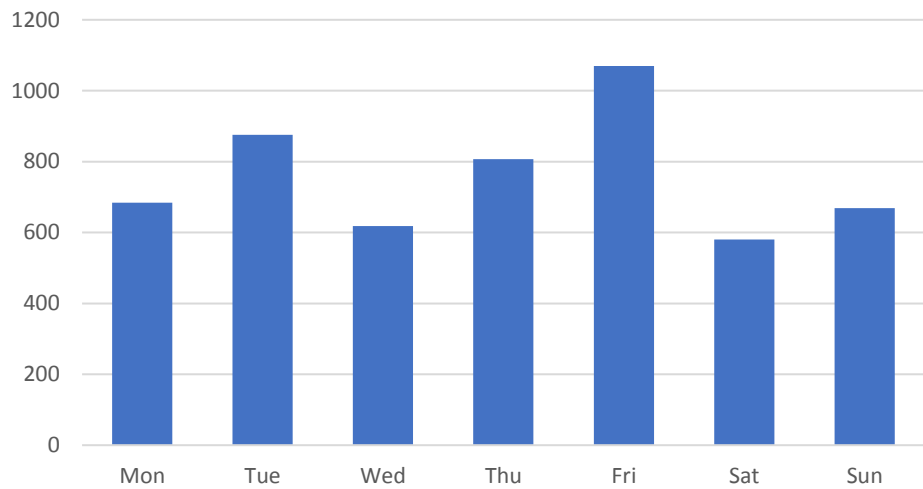
Traffic volumes appear to be averaging around 800 vehicles per day across this and the previous reports. The reduction in traffic on Christmas day can be seen as can the peak on Friday 27 December. This is for traffic travelling from the Warminster direction. Unfortunately, SID was pointing in the wrong direction, traffic was **significantly higher** travelling in the other direction. This was holiday traffic returning from the West Country and using the B3095 as a 'rat run'.

Vehicles by time of day



Afternoon 'rush hour' can be clearly seen.

Vehicles by day



The Friday peak is driven by traffic on the 27th December. Christmas day was on a Wednesday.