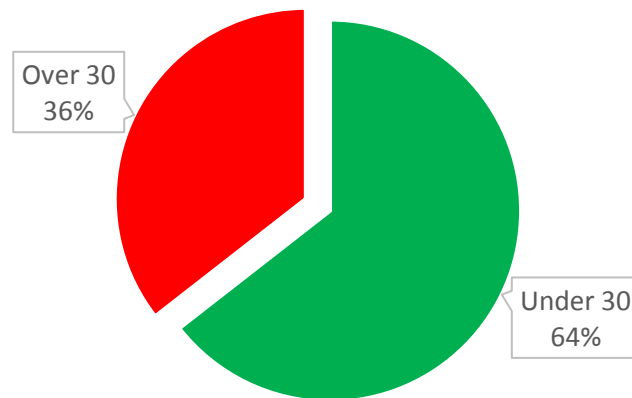


# Sid Report

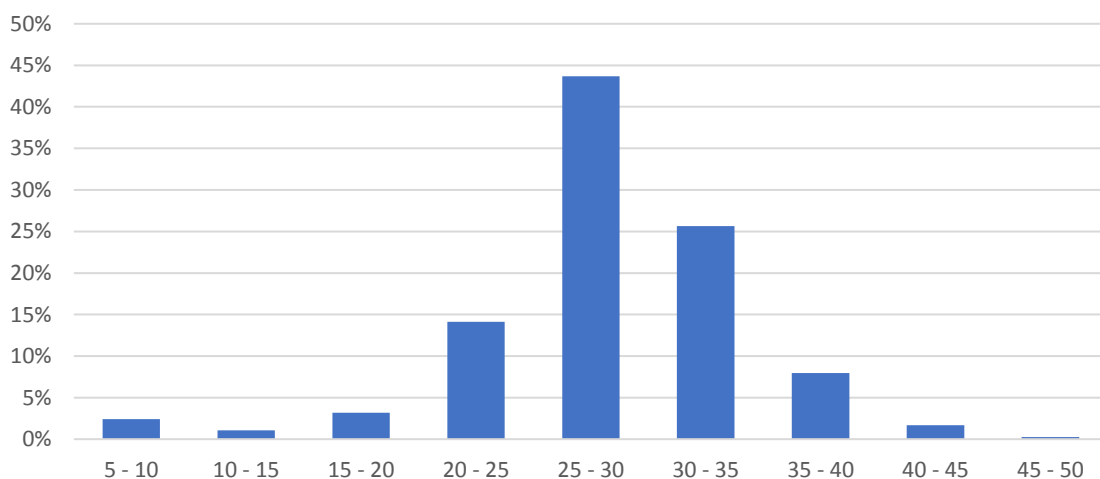
Location:	Dexter Barn, Brixton Deverill
Traffic:	From Warminster
Start:	09 Nov 24 14:30
Finish:	02 Dec 24 14:30

## Speed

Slightly better than the previous report from Kingston, same overall picture.



Distribution - all vehicles



The 85<sup>th</sup> percentile is around 34mph, i.e. 85% of all vehicles are travelling at 34mph or slower. Same as the previous report for Kingston. This figure is used by Wiltshire Council when assessing some speed restriction measures.

There is no obvious pattern between speeding and time of day.

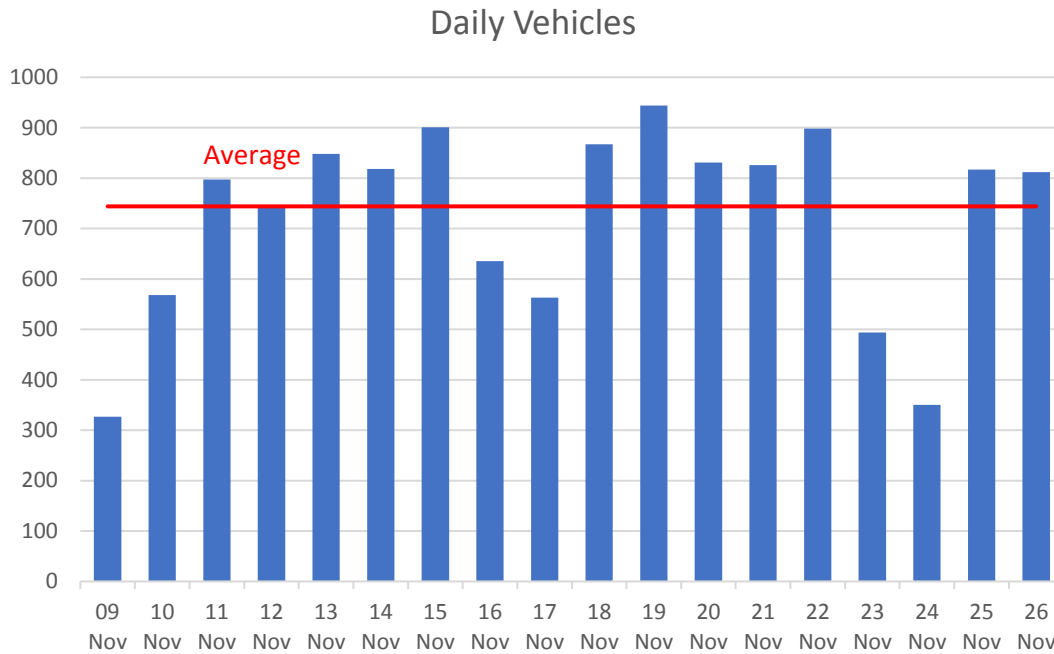
The worst offenders were:

Speed mph	No vehicles
40 - 45	291
45 - 50	42
50 - 55	3

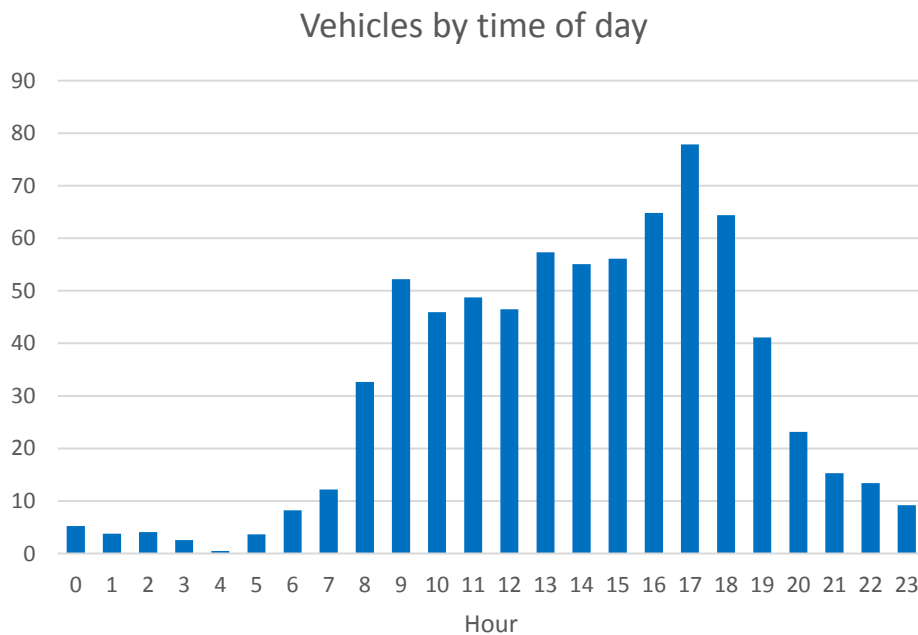
No idiots relative to the previous Kingston report which was:

Speed mph	No vehicles
40 - 45	181
45 - 50	35
50 - 55	4
55 - 60	1
60 - 65	
65 - 70	1

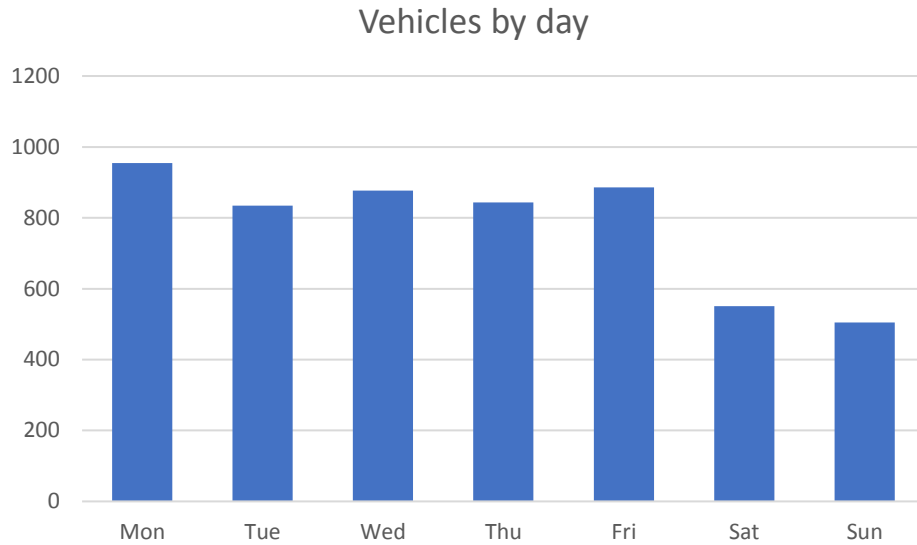
## Traffic Volumes



Broadly similar traffic volumes, average 744 compared to the previous Kingston report at 690. This report is for traffic travelling from Warminster, the Kingston report was for traffic travelling from Mere. The weekends can be seen (16/17 Nov and 23/24 Nov).



A noticeable peak hour rush. Note SID does not understand BST/GMT and internal time was still BST so the peak at 1700 is actually at 1600.



Lower traffic volumes at the weekend.

## Data Collection

SID (speed indicator device) records number of vehicles by five minute time slots in increments of 5mph, example:

	Speed 15 to 20	Speed 20 to 25	Speed 25 to 30	Speed 30 to 35
03/10/2024 14:40	0	0	0	0
03/10/2024 14:45	0	1	1	0
03/10/2024 14:50	1	3	2	1
03/10/2024 14:55	0	0	3	6

## Caveats

Accuracy of SID has yet to be determined, together with the date of calibration and ongoing requirements for calibration.