

Sid Report

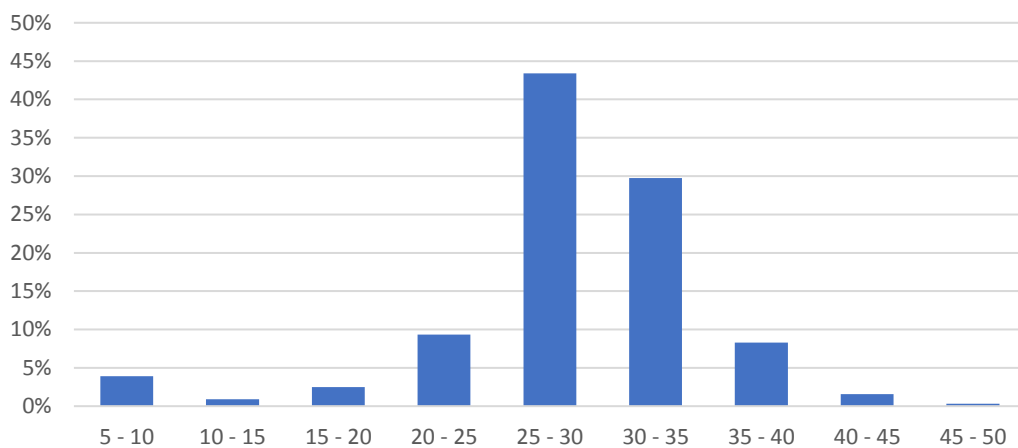
Location:	Green House, Kingston Deverill
Traffic:	From Mere
Start:	03 Oct 24 12:00
Finish:	20 Oct 24 14:40

Speed

40% of traffic exceeds the speed limit.



Distribution - all vehicles



The 85th percentile is 34mph, i.e. 85% of all vehicles are travelling at 34mph or slower. This figure is used by Wiltshire Council when assessing some speed restriction measures.

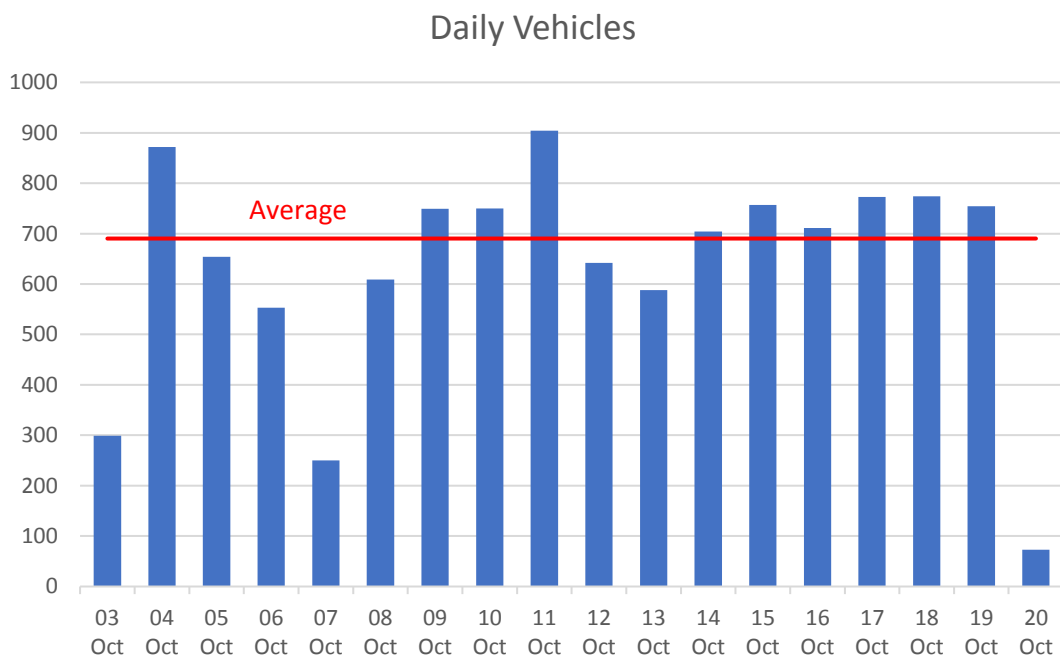
There is no obvious pattern between speeding and time of day.

The worst offenders were:

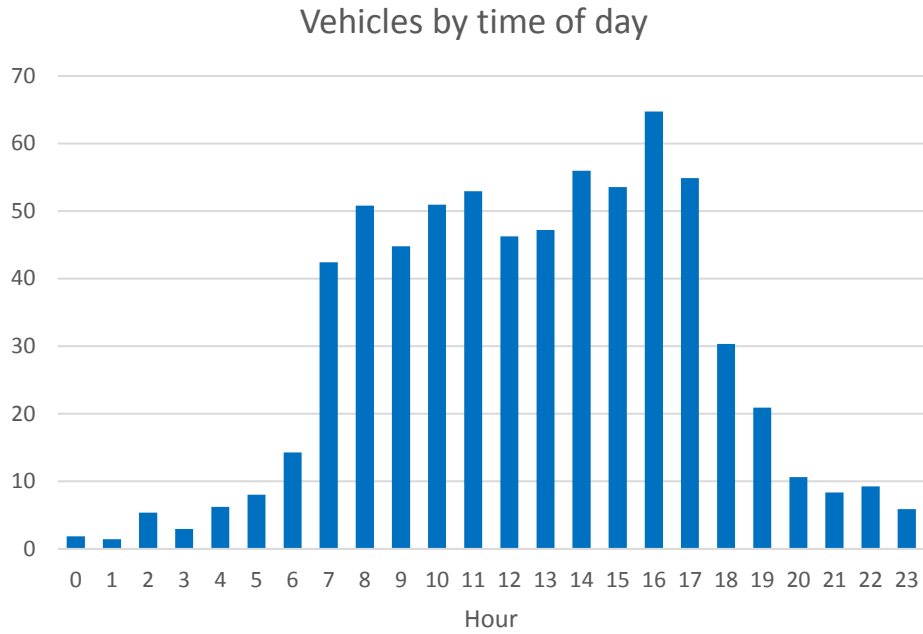
Speed mph	No vehicles
40 - 45	181
45 - 50	35
50 - 55	4
55 - 60	1
60 - 65	
65 - 70	1

The highest speed recorded was on 4 October at 23:20.

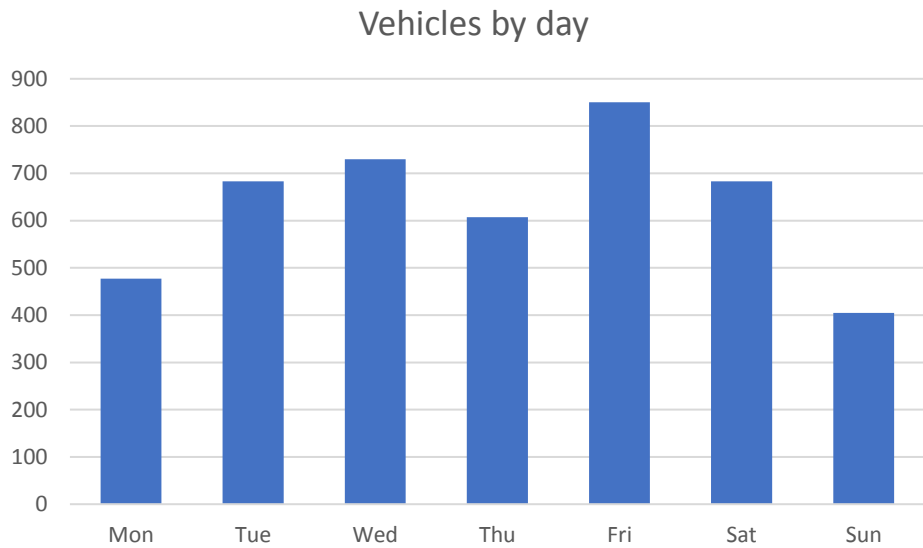
Traffic Volumes



Note, SID records traffic in one direction only.



There is no significant “rush hour” peak.



With the potential exception of Sunday, there is no obvious weekend lull.

Data Collection

SID (speed indicator device) records number of vehicles by five minute time slots in increments of 5mph, example:

	Speed 15 to 20	Speed 20 to 25	Speed 25 to 30	Speed 30 to 35
03/10/2024 14:40	0	0	0	0
03/10/2024 14:45	0	1	1	0
03/10/2024 14:50	1	3	2	1
03/10/2024 14:55	0	0	3	6

Caveats

Accuracy of SID has yet to be determined, together with the date of calibration and ongoing requirements for calibration.