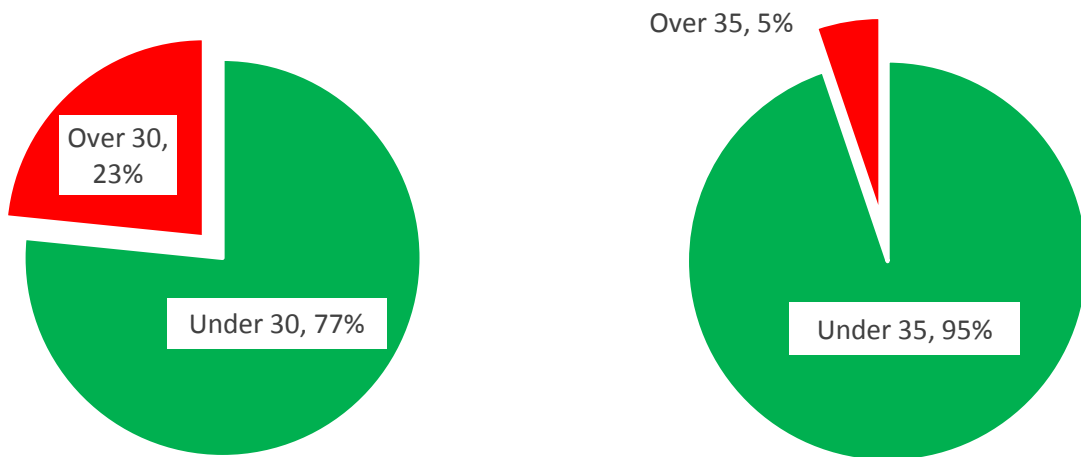


# SID Report

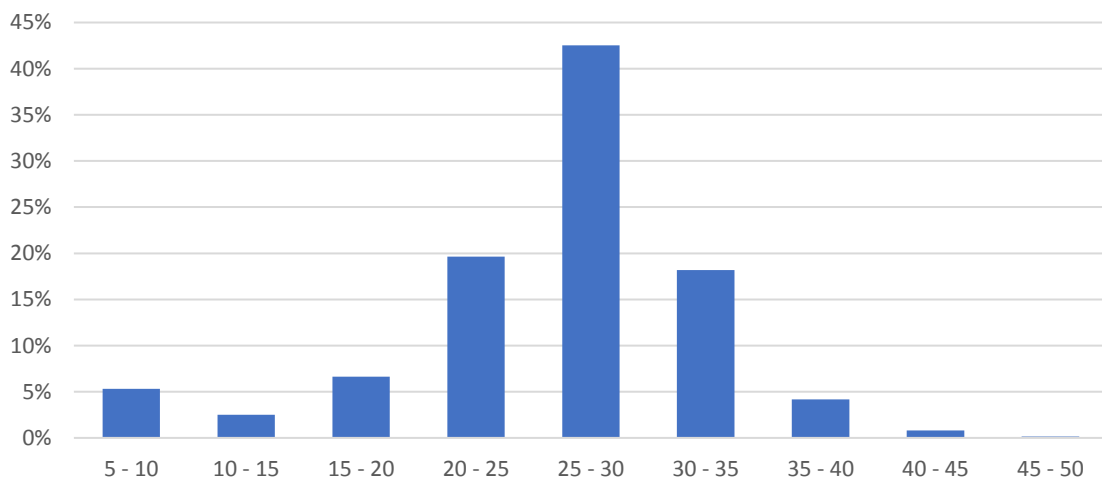
Location:	Monkton Green, Monkton Deverill
Traffic:	From Warminster
Start:	09 Sep 24 14:30
Finish:	30 Sep 24 14:30



## Speed

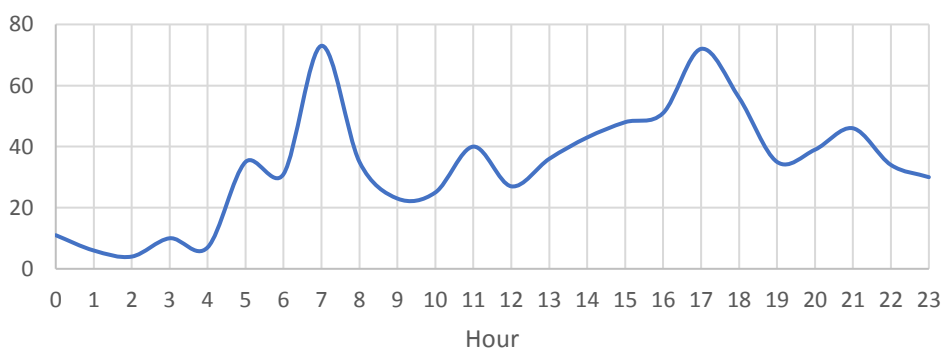


Distribution - all vehicles



The worst times of the day for excessive speeding are at rush hour (7am and 5pm). This correlates with peak traffic volumes:

Vehicles exceeding 35mph

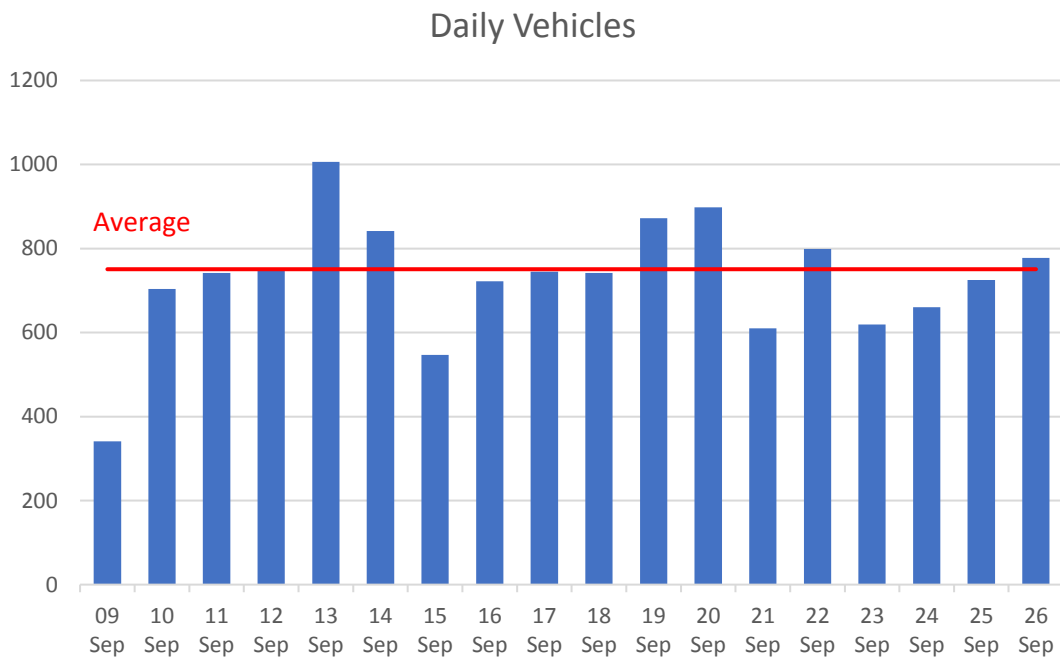


The worst offenders were:

Speed mph	No vehicles
40 - 45	128
45 - 50	26
50 - 55	5
55 - 60	1
60 - 65	3
<b>Total</b>	<b>163</b>

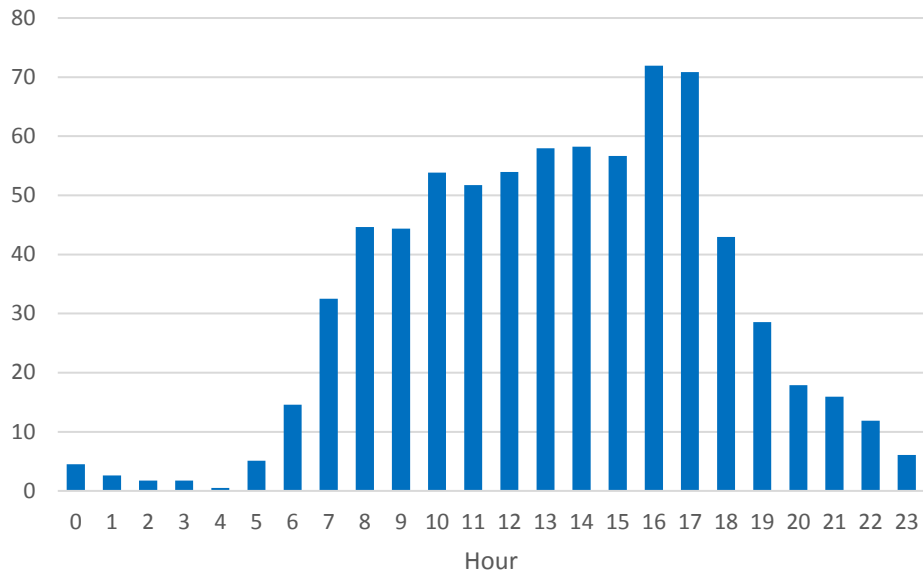
These figures equate to 39 vehicles per day exceeding 35mph and 8 vehicles per day travelling in excess of 40mph in a 30mph limit.

## Traffic Volumes



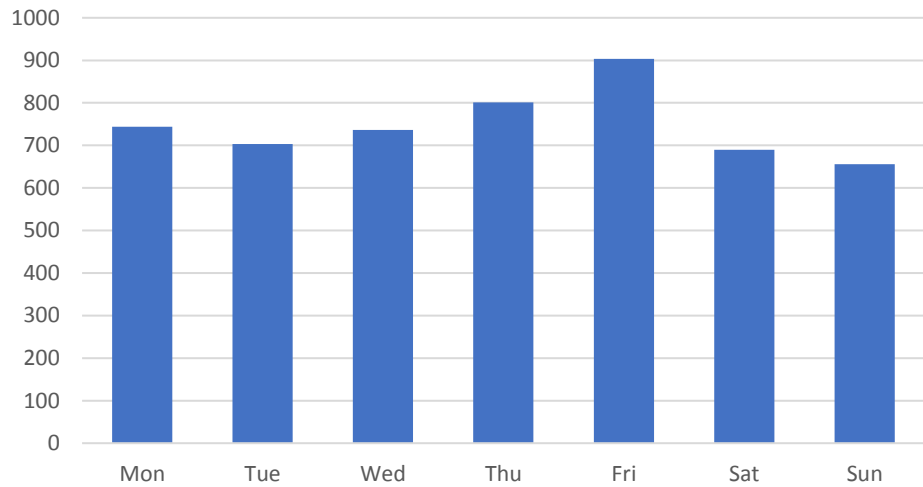
An average of about 750 vehicles per day travelling from the Warminster direction towards Mere.

Vehicles by time of day



Afternoon 'rush hour' can be clearly seen.

Vehicles by day



A slight increase on Friday.